

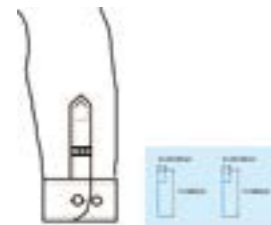


ANHUI GLEADER INTELLIGENT TECHNOLOGY CO. LTD.,
安徽格莱德智能科技有限公司



AUTOMATIC SEWING MACHINE

Machinery & Machinery Parts



JCL1L 全自动衬衫左袖叉工作站
Automatic left shirt sleeve placket attaching machine



JCL1R 全自动衬衫右袖叉工作站
Automatic right shirt sleeve placket attaching machine

J11/12R

全自动衬衫袖叉工作站
Automatic shirt slit workstation

配备可视化，智能化控制系统，具备配备可视化，智能化控制系统，具备智能化断线检测功能，减少返修率。所有信息可视化自动产量报告，自动报警显示，自动报故障等维修方便。
仓的自动于路的车缝机头，不改变兄弟 7300A 传动的原有结构，年缝效果美观机器稳定，维修方便，维修成本低。
独特的吸风系统及自动折叠，对格对条装置，一次性完成袖叉的外形折叠和固定，以保证完美的折叠效果，节省熨烫大袖叉工人 (2-3 人)。
高效左右分工位设计，左右独立上料，保证机头持续工作，无需等待，大大提升生产效率。

output report,automatic al arm display,automatic fault report, easy maintenance.
Equipped with visual, intelligent control system,with intelligent broken linedetection function,reduce the repair rate.Alinformation visualization,automatic.
·The original automatic lifting sewing head without changing the original structure ofbrother 7300A transmission,with beautiful sewing effect, stable machine,convenient maintenance and low maintenance cost.
·Unique suction system and automatic folding, grid-and-stripe device can completethe folding and fixing of the shape of the sleeve fork at one time, so as to ensure the perfect folding effect and save the labor (2-3 people) who ironing the sleeve fork.
Efficient left and right division of labor position design,left and right independentfeeding, to ensure the continuous work of the head,without waiting,greatly improvethe production efficiency.



俱厘

Advantage



刮熨度 No need to iron workers



1 俄露哈代栓所俄 1 hour operation of the machine



侧袋透侄赢撩伙3做 Production is 3 times higher than traditional

1.5 擴規柵

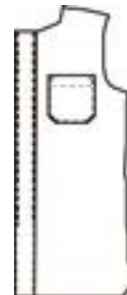
1.5 years back



1 律所俄栓抵=3 仔侄赢邊度+1 仔熨度
1 person operating machine = 3 traditional workers + 1 ironing

技术参数 Technical parameters

型号 Model	J11 全自动左袖叉机 Automatic Left Sleeve Fork Machine	J12R 全自动右袖叉机 Automatic Right Sleeve Fork Machine
电源 Power	380V 50Hz	380V 50Hz
空氧压力 Air Pre	0.6MPa	0.6MPa
总耗电量 Power cons	2.5Kw	2.5Kw
耗氧量 Air cons	1L/PC	1L/PC
尺寸 Air cons	1700x1500x1500mm	1700x1500x1500mm
重量 weight	500KG	500KG



J13-02A-02020-A

自动贴袋机
Automatic pocket patching machine

不需要点位工，不需要烫工。
采用机械折袋，缝制一次性完成工艺，缝制质量稳定。
对操作工没有技术要求，简单培训就可上岗。
日生产效率 2000 个 -2200 个 /8 小时。
缝制形状可任意设定（斜角，直角，圆角等）。

No point work, no ironing.
Using mechanical folding bag, the sewing process is completed at one time, and the sewing quality is stable.
There are no technical requirements for operators, and simple training can be used.
The daily production efficiency is 2000-2200/8 hours.
The sewing shape can be set arbitrarily (bevel, right angle, round angle, etc.).

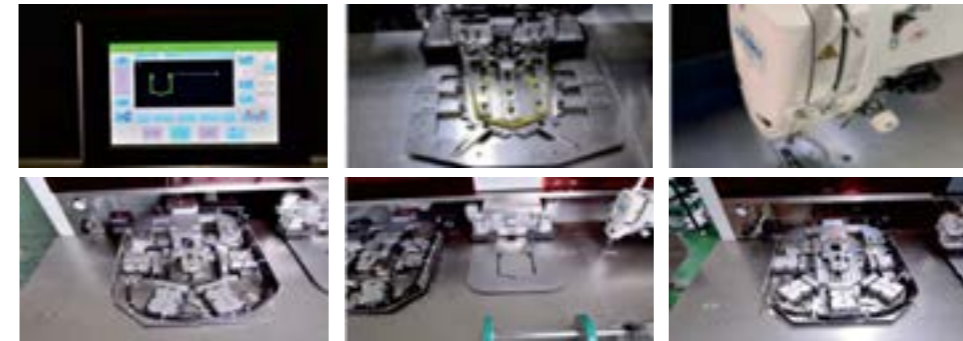


优势

提高生产效率，订袋一系列工序 10 秒 / 不用移动袋布缝制。与一般的泛用机相比实现提升 7 倍以上的生产效率。
操作面板是采用液晶面板，缝制数据的输入、修正通过操作面板 就可以实现，可用 USB 接口导入缝制线迹档案及对机器数据的导入 和导出。
快速口袋模板交换，口袋模板的交换时间，在不使用工具的情况下，数分钟内就可以完成，即使是小批量生产也能灵活的应对。

Advantag

Increase productivity,a series of bag-ordering processes is 10 seconds/sewing without moving the bag cloth. compared with general general purpose machines, the production efficiency is increased by more than 7 times.
The operation panel is a liquid crystal panel,sewing data input and correction can be realized through the operation panel,USB interface can be used to import sewing stitch files and import and export machine data.
Fast pocket template exchange,the exchange time of the pocket template, without the use of tools,it can be completed in a few minutes, and even small batch production can be flexibly dealt with.

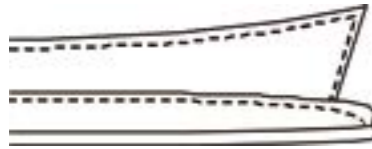


工序时间、生产效率的比较 / Comparison of process time and production efficiency

订后袋工序 Bag after order process	泛用机 Universal machine	平车 Flatcar	JCL204M-02020-A
烫后袋边 After ironing the edge of the bag	14s	70s	10s
订后袋 Order back pocket	48s		
袋口套结 Bag tacking	8s		
生产量 Production	316 个袋 Bags		2000-2200 个袋 Bags

技术参数 Technical parameters

机种名 Model name	J13-02A-02020-A
搭载机头 Equipped with nose	DDL8000APSH
最快缝制速度 The fastest sewing speed	3000 rpm
缝制范围 Sewing range	200×200 mm
针距长度、最大摆幅 Stitch length, maximum swing	0.1-12.7 mm
使用针 (出货时的型号) Needle used (model at the time of shipment)	DP*5-18#
面线断线检测装置 Upper thread breakage detection device	松下对射式传感器 Panasonic through-beam sensor
堆叠片数 Number of stacks	30 片 tablets
储存花样数 Number of stored patterns	3000 种 3000 kinds
机器尺寸 (长 * 宽 * 高) Machine size (length * width * height)	1660*1400*1300 mm



J22-05M05040-B

自动贴袋机
Automatic pocket patching machine

自动小领机的优势。
对操作工没有技术要求，简单培训即可上岗。
颠覆传统手工缝存在的前后误差，解决前后尺寸不一等现象，自动伸缩变换尺码大小，无需更换模，可完成同一种款式不同尺寸规格的缝制要求。
精准定位领口尺寸，确保缝制效果始终如一。

Advantages of automatic small collar machine.
There are no technical requirements for operators, and simple training can be employed.
Subvert the front and back errors of traditional hand sewing, solve the phenomenon of different sizes before and after, automatically expand and change the size, without changing the mold, and can complete the sewing requirements of the same style and different sizes.
Precise positioning of the neckline size to ensure consistent sewing results.



优势

提高生产效率，保证机头连续工作，操作员只需按对应小领领角位置摆放，按动按钮开关，即可完成自动缝纫、收料等一系列动作。

操作面板是采用液晶面板，缝制数据的输入、款式通过操作面板就可以实现可用USB接口导入缝制线迹档案及对机器数据的导入和导出。

使用用途：主要针对衬衫领口三层夹的一次性缝纫要求。
自动伸缩调节模板，放置模与缝制模大小尺寸调节同步。

Advantag

Improve production efficiency and ensure continuous operation of the machine head. The operator only needs to place the corresponding small collar collar angle and press the button switch to complete a series of actions such as automatic sewing and material collection.

The operation panel adopts a liquid crystal panel. The input and style of sewing data can be realized through the operation panel to import sewing stitch files and import and export machine data.

Usage: mainly for the one-time sewing requirements of the three-layer clip of the shirt collar.

Automatic expansion and contraction adjustment template, placing mold and sewing mold size adjustment synchronization.

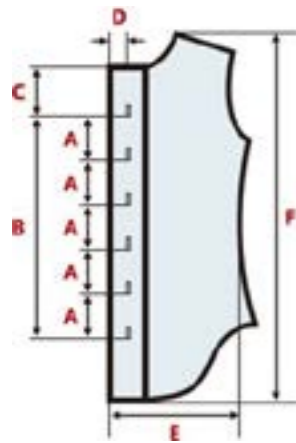
工序时间、生产效率的比较 / Comparison of process time and production efficiency

三层夹工序 Three-layer clamping process	传统用时 Traditional time	JCL205M-05040-B
三层夹缝 Three-layer gap	30-40 秒 seconds	15-20 秒 seconds
生产量 Production	700 片 Tablets	1400 片 Tablets

注：按 8 小时 75% 算 Note: 75% for 8 hours

技术参数 Technical parameters

机种名 Model name	J22-05M05040-B
搭载机头 Equipped with nose	DDL8000APMS / DDL900oc
最快缝制速度 The fastest sewing speed	4000 rpm
缝制范围 Sewing range	500×400mm
针距长度、最大摆幅 Stitch length, maximum swing	5mm
使用针 (出货时的型号) Needle used (model at the time of shipment)	DBx1/14#
面线断线检测装置 Upper thread breakage detection device	松下对射式传感器 Panasonic through-beam sensor
缝制模式 Sewing mode	11 种 11 types
机器尺寸 (长 * 宽 * 高) Machine size (length * width * height)	1750*900*1150mm



J1790N-L2 | 全自动衬衫门襟锁眼机 Full automatic shirt lapel keyhole machine

自动化程度高、速度快、连续自动缝绉整排扣眼、高品质、高效缝制；有预置装置，提高工作效率。

配置 LED 照明灯、照亮缝料、方便操作及提高缝制品质与生产效率；有 20 种花样存储功能，每个扣眼间距及扣眼数能在操作屏上设置及保存，生产效率提高了 30-50%。

配置大型液晶彩色触摸操作面板，高清晰图形标识，实现所有数据设定、图形编辑及修改、支持 USB 数据接口、存储与调用图形方便快捷、精准控制扣眼长短、形状等缝制，提高缝制品质。

独特的电子夹线机构，通过操作面板应对不同缝制条件设置平行部和套结部的上下线张力，线迹稳定精美。

High degree of automation, fast speed, continuous automatic sewing of the whole row of buttonholes, high-quality, efficient sewing; preset devices to improve work efficiency.

Equipped with LED lighting to illuminate the sewing material, convenient operation and improve sewing quality and production efficiency; there are 20 kinds of pattern storage functions, each buttonhole spacing and buttonhole number can be set and saved on the operation screen, and the production efficiency has increased by 30 - 50%.

Equipped with large LCD color touch operation panel, high-definition graphic logo, realize all data setting, graphic editing and modification, support USB data interface, convenient and quick storage and recall of graphics, precise control of buttonhole length, shape, etc. sewing, improve sewing quality.

Unique electronic thread clamping mechanism, through the operation panel to respond to different sewing conditions, set the upper and lower thread tensions of the parallel part and the tacking part, and the stitches are stable and beautiful.

A	间隔 Interval	0-610mm(0.1mm 单位) (可等距最不等距)
B	总送布量 Total cloth feeding amount	610mm
C	上端间隔 Upper interval	140mm
D	布端开始锁眼位置 Position of buttonhole at cloth end	7-21mm
E	衣片幅度 Garment width	220-420mm
F	衣片长度 Garment length	400-880mm

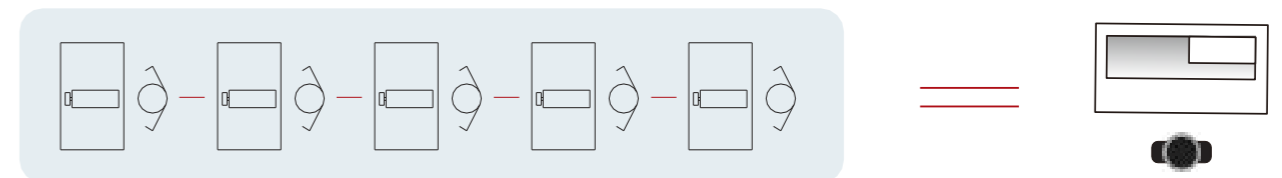
自动机是传统工序 5 倍效率，每台机器可节省 4 人
The automatic machine is 5 times the efficiency of the traditional process, each machine can save 4 people

1人操作2台
One operator can operate 2 machines simultaneously

2150-2420 个/月

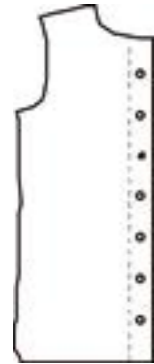
1人操作3台
One operator can operate 3 machines simultaneously

3220-3680 个/月



技术参数 Technical parameters

用途 Use	衬衫、女装、工作服等棉布纽扣
缝制速度 Sewing speed	最高：4,200 针 / 分 Max.4200/rpm
切刀尺寸 Cutter size	6.4~31.8mm(1/4~11/4")
套结幅度 Tacking range	标准 5mm Max.5mm
锁眼缝长度 Buttonhole stitch length	最大 120mm Max.120mm
机针型号 Needle model	DPx5 (11#)11#-14#
可记忆数据 Memorable data	最多 99 个花样 Max.99
压脚上升高度 Lifting height of presser foot	最大 17mm Max.17mm
自动抬压脚装置 Automatic presser foot lifting device	步进马达驱动 Stepper motor drive
针摆驱动方式 Needle pendulum drive	步进马达驱动 Stepper motor drive
送布驱动方式 Feeding drive mod	步进马达驱动 Stepper motor drive
切刀驱动方式 Cutter drive mode	双向电磁铁驱动 Bidirectional solenoid drive
标准花样数 Standard pattern number	30 个
电源 / 消耗电力 Power supply/power consumption	单相 AC220V~240V/600vASingle phase AC220V~240V/600vA



J4300A-03M

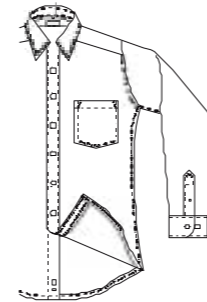
自动送料订扣机
Automatic feeding button machine

带有订扣机起针校对，送扣、订扣、扣爪、扣夹安装简易校对。
纽扣正反识别装置，能精确识别纽扣正反。
振动盘采用变频控制方式，智能、高效送扣。
适用于各种衣物的纽扣缝制，开发了性能更加强大的自动高速送扣装置，性能稳定，效率更高，纽扣直径最大能达到30mm，平均每分钟能钉20-30个纽扣。

It is equipped with a button sewing machine to start the needle proofreading, and easy proofreading for the installation of buckles, buckles, claws, and buckles. Button front and back recognition device can accurately identify the front and back of the button. The vibrating plate adopts frequency conversion control mode, which is intelligent and efficient for buckle delivery. It is suitable for sewing buttons of all kinds of clothes. It has developed a more powerful automatic high-speed button feeding device with stable performance and higher efficiency. The maximum button diameter can reach 30mm, and the average button can be nailed 20-30 per minute.

技术参数 Technical parameters

型号 Model	J4300A-03M-S	J4300A-03M-L	J4300A-03M-B
缝制速度 Sewing speed	2700 rpm		
供给方式 Feeding mode	振动盘供给 /Vibrating tray method		
纽扣种类 Button type	圆形平扣尺寸：直径 8-15mm		
纽扣直径 Button Diameter	9-15mm	9-15mm	8-30mm
纽扣厚度 Button Thickness	1.8-5mm		
输钮方式 Button feeding mode	电子气动机械混合输钮方式 /Pneumatic and mechanical mix button feeding mode		
纽扣大小识别装置 Button size identification device	自动识别 /Automatic		
双纽扣共用 Two size button	同时完成大小扣 Finish different size button in same time		
马达 Motor	AC 伺服马达 550W 直接驱动式 / AC servomotor 550W		
电源 Power	单相 Single phase 200~240V		
气压 Air pressure	0.5Mpa、1.7L/min		



J683A-3

自动差动卷下摆机
Automatic differential roll hem machine

适用于夹克、棉服、羽绒服拉链的缝制。
适用于裙子、家纺、时装及工艺品的花边缝制。
适用于男女装的领口、门襟、袖克夫、滚边、卷下摆、合缝、裤腰等易错层工序的缝制。
适用于棉服、羽绒服等较厚服饰的同步缝制。

Suitable for the sewing of jacket, cotton and down jacket zipper.
Suitable for skirt, home textiles, fashion and crafts of the pleated sewing.
It is suitable for the sewing of men's and women's wear such as neckline, placket, sleeve cuff, piping, rolled hem, stitching, trouser waist, etc.
It is suitable for the simultaneous sewing of thicker garments such as cotton and down jackets.



技术参数 Technical parameters

型号 Model	J683A-3
缝制速度 Sewing speed	4000 stitches/min
使用机针 Needle	振动盘供给 /Vibrating tray method
针距 Pitch	DBX1 9#-18#
最大压脚提升量 Max lift of the presser foot	5mm
差动 Differential	N/A
自动剪线 Automatic thread trimming	√



J33-08S 落下级自缝合机 (衬衫专用) Fall-down self-suturing machine (For knitting)

平缝机自动化缝纫, 精准快捷、高速运作、噪音低
自动计件功能
断线自动报警功能
底线结束报警功能
电子压脚功能
花样机所有功能 (需另购装置)

Automatic lockstitch sewing, Accurate and fast, High speed operation, Low noise
Automatic piece counting function
Automatic disconnection alarm function
Bottom line end alarm function
Electronic presser foot function
All functions of pattern machine (Need to purchase separately)

选配装置 Optional Device



切刀装置 Cutter device



红外线定位装置
Infrared positioning device



吸风装置 Suction function



衣盖 Bag cover



衣盖 Bag cover



上下级领 Upper and lower collar



上下级领 Upper and lower collar



上下级领 Upper and lower collar

技术参数 Technical parameters

型号 Model	J33-08S
搭载机头 Head	重机 -DDL9000B-MS(JUKI)
工作范围 The scope of work	1000mm x200mm
功率 Power	1.5kw
使用电源 Electric	220V 单相 50/60Hz (必须接地线)
使用气压 Air pressure	0.5Mpa(5kgf/cm2)
机针 Needle	DBX1 (8#,9#, 11#, 12#, 14#)
针距 Needle gauge	0.5-6mm
压脚抬高高度 Lifting height of presser foot	0-13mm
控制系统 Control system	微电脑控制 Microcomputer control
缝纫机转速 Sewing speed	100-3200 rpm
记忆程序数量 Number of memory programs	999
真空电机功率 Vacuum motor power	1.1kg
机器重量 Machine Weight	340kg
机器尺寸 Machine size	165×102×155cm



J34-09S | 自动间领袖口机

Automatic collar cuff machine

采用自动升降收料装置。
采用自动检测针距系统。
衬衫极速间领线 13 秒 / 件。
规范的完美线迹，智能化一次完成并自动整理收料，
脱技能省人工，实现一人操作多台机器。
自适应领线对角线功能，间线边 & 角齐整一致。
适用于衬衫的领和袖口边线 0.15-0.06 压线。

It adopts automatic lifting and receiving device
Adopt automatic needle length detection system
Shirt extreme speed collar line 13 seconds / piece.
Standardized perfect stitches, intelligently complete at one time and automatically sort and collect materials, save skills and labor, and realize one person to operate multiple machines.
Self-adaptive neckline diagonal function, the edges & corners of the line are neat and consistent
Applicable to the collar and cuff edges of shirts 0.15-0.06 crimping



衣领 Collar

袖口 Cuff

技术参数 Technical parameters

型号 Model	J34-09S
搭载机头 Head	重机 -DDL8000A(JUKI)
工作范围 The scope of work	1000mm x200mm
功率 Power	1kw
使用电源 Electric	220V 单相 50/60Hz (必须接地线)
使用气压 Air pressure	0.5Mpa(5kgf/cm ²)
针距 Needle gauge	0.5-5mm
控制系统 Control system	微电脑控制 Microcomputer control
缝纫机转速 Sewing speed	3000 rpm
机器重量 Machine Weight	175kg
机器尺寸 Machine size	129×86×124cm



K31-00-KS | 自动贴袋机
Automatic poeket patching Machine

稳定可靠的冷折装置。
快速换模装置，更换模具简易方便。
标配预缩水装置
断线感应装置，断线即停，避免做无用功。
收料装置，提高工作效率。

The unit is equipped with an easy adjustable cold folding group.
Pocket moulds are easy to produce in the factory, or from our side, and convenient to exchange.
Preshrinking device is standard.
Thread breaking detector, the unit will stop at once after thread breaking, not waste working time.
Stacker, improve efficiency.



传统工艺操作流程

Traditional process operation flow

6-8 个工人
熟练操作工至少 3 人

6-8workers

Atleast 3 skilled operators

烫袋 ▶ 堆放 ▶ 缝制 ▶ 套接 ▶ 剪线头

Ironingbag ▶ Stacking ▶ Sew ▶ Soc ketconnection ▶ Scissors

适用各种形状和缝料的后袋贴袋工序，例如圆形、方形、曲线形和不对称口袋形状，可以对牛仔裤、休闲裤、军装和工作服进行贴袋等。

Suitable for back bag pasting processes of various shapes and sewing materials, such as round, square, curved and asymmetric pocket shapes. it can be used for bagging jeans, casual pants, military uniforms and work clothes, etc.



缝制实物效果 / Sewing effect

技术参数 Technical parameters

机头 Nose	兄弟311 Brother 311	最大产能 Maximum capacity	240-300个/小时
适用布料 Applicable fabric	牛仔布或其他厚质布料 Denim or other thick fabrics	电源 power supply	AC220V,50/60Hz
转速 Rotating speed	2800 rpm	额定功率 rated power	0.9Kw
车缝范围 Sewing range	230*230MM	工作气压 working pressure	6bar
针码长度 Stitch length	0.1-20MM	耗气量 Air consumption	3L/分钟
产品计数 Product count	0-999	净重 net weight	50KG
花样存储数 Pattern storage number	999个	毛重 Gross weight	730KG
机针型号 Needle model	DP17	包装尺寸 Package dimensions	1850*1650*1600MM



K32-01-HM 花样机款贴袋机 (适合厚料)

Pattern machine type pocket machine
(suitable for thick materials)

全自动免烫贴袋机适用于任何一种外饰的口袋,侧重于牛仔裤、衬衫、休闲裤、军裤及工作服等类似缝制品。
自动免烫折袋机折构, 选用了气缸全自动折边技术; 提高了生产效率; 使口袋的折边不在需要熨斗烫台, 节省人工。
内压框自动收缩机构, 使口袋的边缘线迹变化不在有局限性。内压框增加了可以更换调节的功能。
自动收料机构, 机器缝制结束后, 采用了自动机械手进行收料, 可对缝品整齐摆放。

Fully automatic non-ironing bag sticker is suitable for any kind of exterior pockets, focusing on jeans, shirts, casual pants, military trousers and work clothes and other similar sewing products.

- The folding mechanism of the automatic non-iron folding bag machine adopts the cylinder automatic folding technology, which improves the production efficiency and saves labor by eliminating the need for ironing table for folding pockets.
- The automatic shrinkage mechanism of the internal pressure frame makes the change of the pocket's edge trace not limited. The internal pressure frame adds the function of replaceable adjustment.

Automatic feeding mechanism, after machine sewing, the automatic manipulator is used for feeding, and the sewing products can be placed neatly.

传统工艺操作流程

6-8 个工人
熟练操作工至少 3 人

烫袋 ▶ 堆放 ▶ 缝制 ▶ 套接 ▶ 剪线头

Traditional process operation flow

6-8 workers

At least 3 skilled operators

Ironing bag ▶ Stacking ▶ Sew ▶ Socket connection ▶ Scissors

全自动贴袋机自动化操作流程

一个人一次性完成免烫缝制套接收料防鸟巢。
实现口袋一系列工序自动化, 在提高生产效率同时, 提高品质。实现从口袋折边、裁片的定位设置、订口袋、套结、堆放为止, 无技能要求就能操作。一个口袋 8-11 秒, 就可以完成口袋的设置、折边与缝制的循环作业只需要一台机器

Automatic operation process of automatic bag-sticking machine

One person can complete ironing, sewing, socket connection, and receiving material without bird's nest.
Realize a series of pocket process automation, improve production efficiency and quality at the same time. From the pocket folding, cutting, positioning settings, ordering pockets, knots, stacking, no technical requirements can be operated. A pocket can be set, folded and sewed in 8-11 seconds with only one machine.

技术参数 Technical parameters

机头缝制速度 Head sewing speed	3000st/min
搭载机头 Equipped with handpiece	YL311HS
机针 Machine needle	DP*17
缝制线迹编程 Sewing stitch programming	操作屏输入方式 Input mode of operation screen
线迹编程储存容量 Line Programming Storage Capacity	最多可储存花样999种 Up to 999 kinds of patterns can be stored
针距 Stitch distance	1.0mm-3.5mm
压脚上升高度 Pressure foot rising height	80mm
缝制口袋范围 Sewing pocket range	X方向50mm-260mm Y方向50mm-220mm X direction 50mm-260mm Y direction 50mm-220mm
缝制口袋速度 Speed of sewing pockets	6-10秒/个 6-10 seconds per second.
折袋方式 Folding method	7个方向的双气缸折刀同时工作进行折袋 Double cylinder folder in 7 directions works simultaneously to fold bags
缝制工作方式 Sewing methods	折袋和缝制同时进行, 自带断线保护功能 Bag folding and sewing are carried out at the same time, with protective function of broken thread
送布驱动方式 Feeding Drive Mode	台湾台达伺服电机驱动(750w) Taiwan DELTA servo motor drive (750w)
电源 Power Supply	AC220V
气压、空压消费量 Air Pressure and Air Pressure Consumption	0.5Mpa (5kg/cm ²)、22dm ³ /min
重量 Weight	600KG



K33-02-HM | 花样机款贴袋机 (适合厚料)
Pattern machine type pocket machine
(suitable for thick materials)

无需热烫, 通过冷折模具一次缝制成型;
自动送料、折料、缝制无间断连续操作;
适用于多种形状的口袋;
自动收料系统;
无技能操作要求。

No need heating, from cold mold to sewing molding;
Automatic feeding, folding, sewing without intermittent continuous operation;
Suitable for a variety of shape pockets;
Automatic feeding system;
Unskilled operation requirements adjustment.
Automatic feeding mechanism, after machine sewing, the automatic manipulator is used for feeding, and the sewing products can be placed neatly.



传统工艺流程

6-8 个工人
熟练操作工至少 3 人

烫袋 ▶ 堆放 ▶ 缝制 ▶ 套接 ▶ 剪线头

Traditional process operation flow

6-8 workers

At least 3 skilled operators

Ironing bag ▶ Stacking ▶ Sew ▶ Socket connection ▶ Scissors

全自动贴袋机自动化操作流程

一个人一次性完成免烫缝制套接收料防鸟巢。
实现口袋一系列工序自动化, 在提高生产效率同时, 提高品质。
实现从口袋折边、裁片的定位设置、订口袋、套结、堆放为止,
无技能要求就能操作。一个口袋 8-11 秒, 就可以完成口袋的设置、
折边与缝制的循环作业只需要一台机器

Automatic operation process of automatic bag-sticking machine

One person can complete ironing, sewing, socket connection, material receiving, and anti-bird's nest.
Realize a series of pocket process automation, improve production efficiency and quality at the same time. From the pocket folding, cutting, positioning settings, ordering pockets, knots, stacking, no technical requirements can be operated. A pocket can be set, folded and sewed in 8-11 seconds with only one machine.

技术参数 Technical parameters

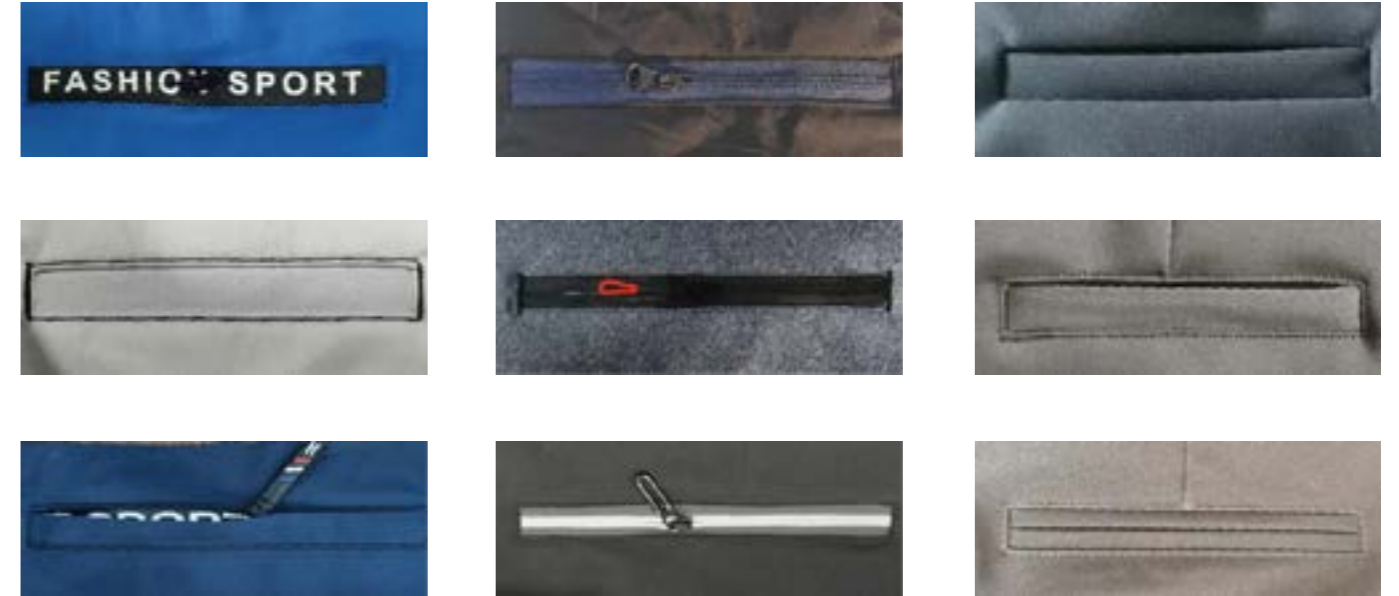
机头缝制速度 Head sewing speed	3000st/min
缝制范围 Sewing range	400x22cm
最大缝制范围 Maximum sewing range	500x25cm
搭载机头 Equipped with handpiece	YL6730
机针 Machine needle	DP*17-DP*5
缝制线迹编程 Sewing stitch programming	操作屏输入方式 Input mode of operation screen
线迹编程储存容量 Line Programming Storage Capacity	最多可储存花样999种 Up to 999 kinds of patterns can be stored
针距 Stitch distance	1.0mm-3.5mm
压脚上升高度 Ressure foot rising height	60mm
缝制口袋范围 Sewing pocket range	X方向 100mm-400mm Y方向 100mm-220mm X direction 100-400mm Y direction 100mm-220mm
缝制口袋速度 Speed of sewing pockets	6-10秒/个 6-10 seconds per second.
折袋方式 Folding method	7个方向的双气缸折刀同时工作进行折袋 Double cylinder folder in 7 directions works simultaneously to fold bags
缝制工作方式 Sewing methods	折袋和缝制同时进行, 自带断线保护功能 Bag folding and sewing are carried out at the same time, with protective function of broken thread
送布驱动方式 Feeding Drive Mode	台湾台达伺服电机驱动 (750w) Taiwan DELTA servo motor drive (750w)
电源 Power Supply	AC 220V
气压、空压消费量 Air Pressure and Pressure Consumption	0.5Mpa (5kg/cm2) .22dm3/min
重量 Weight	650KG



K33-03-HM 全自动开袋机 Automatic bag opener

本开袋机适合真袋、假袋、体恤衫门襟，特别是运动裤拉链等工序 都能一次性完成，是普通开袋机的三倍。
自动免烫折袋机折构，选用了气缸全自动折边技术；提高了生产效率；使口袋的折边不在需要熨斗烫台，节省人工。
内压框自动收缩机构，使口袋的边缘线迹变化不在有局限性。内压 框增加了可以更换调节的功能。
自动收料机构，机器缝制结束后，采用了自动机械手进行收料，可 对缝品整齐摆放。

The bag opener is suitable for real bags, fake bags, T-shirt placket, especially the zipper of sports pants, which can be completed at one time, which is three times of the ordinary bag opener.
The folding mechanism of the automatic non-iron folding bag machine adopts the cylinder automatic folding technology, which improves the production efficiency and saves labor by eliminating the need for ironing table for folding pockets.
The automatic shrinkage mechanism of the internal pressure frame makes the change of the pocket's edge trace not limited. The internal pressure frame adds the function of replaceable adjustment.
Automatic feeding mechanism, after machine sewing, the automatic manipulator is used for feeding, and the sewing products can be placed neatly.



技术参数 Technical parameters

机头缝制速度 Head sewing speed	3000st/min
搭载机头(兄弟款) Equipped with handpiece	311 (HS)
机针 Machine needle	YL*190(12#, 14#, 16#)
缝制线迹编程 Sewing stitch programming	操作屏输入方式 Input mode of operation screen
线迹编程储存容量 Line Programming Storage Capacity	最多可储存花样999种 Up to 999 kinds of patterns can be stored
针距 Stitch distance	1.0mm-3.5mm
压脚上升高度 Pressure foot rising height	60-80mm
缝制口袋范围 Sewing pocket range	60mm-80mm X方向 100mm-220mm Y方向 10mm-35mm X direction 100mm-220mm Y direction 12mm-30mm
缝制口袋速度 Speed of sewing pockets	10-15秒/个 10-15 seconds per second.
折袋方式 Folding method	四个方向同时进行折袋 Folding bags in four directions at the same time
开口袋方式 Pocket opening	用100W激光头切割 Cutting with 100W laser head
缝制工作方式 Sewing methods	折袋和缝制同时进行，自带断线保护功能 Bag folding and sewing are carried out at the same time, with protective function of broken thread
送布驱动方式 Feeding Drive Mode	台湾台达伺服电机驱动(750w) Taiwan DELTA servo motor drive (750w)
电源 Power Supply	AC220V
气压、空压消费量 Air Pressure and Air Pressure Consumption	0.5Mpa (5kg/cm2), 22dm3/min
重量 weight	650KG



K33-04-HM 杜克普贴袋机 (适合中薄料)
Dukepu patch pockets
(suitable for medium)

全自动免烫贴袋机适用于任何一种外饰的口袋，侧重于牛仔裤、衬衫、休闲裤、军裤及工作服等类似缝制品。
自动免烫折袋机折构，选用了气缸全自动折边技术；提高了生产效率；使口袋的折边不在需要熨斗烫台，节省人工。·内压框自动收缩机构，使口袋的边缘线迹变化不在有局限性。内压框增加了可以更换调节的功能。
自动收料机构，机器缝制结束后，采用了自动机械手进行收料，可对缝品整齐摆放。

Fully automatic non-ironing bag sticker is suitable for any kind of exterior pockets, focusing on jeans, shirts, casual pants, military trousers and work clothes and other similar sewing products.
The folding mechanism of the automatic non-iron folding bag machine adopts the cylinder automatic folding technology, which improves the production efficiency and saves labor by eliminating the need for ironing table for folding pockets.
The automatic shrinkage mechanism of the internal pressure frame makes the change of the pocket's edge trace not limited. The internal pressure frame adds the function of replaceable adjustment.
Automatic feeding mechanism, after machine sewing, the automatic manipulator is used for feeding, and the sewing products can be placed neatly.

传统工艺流程

6-8 个工人
熟练操作工至少 3 人

烫袋 ▶ 堆放 ▶ 缝制 ▶ 套接 ▶ 剪线头

Traditional process operation flow

6-8 workers

At least 3 skilled operators

Ironing bag ▶ Stacking ▶ Sew ▶ Socket connection ▶ Scissors

全自动贴袋机自动化操作流程

一个人一次性完成免烫缝制套接收料防鸟巢。
实现口袋一系列工序自动化，在提高生产效率同时，提高品质。
实现从口袋折边、裁片的定位设置、订口袋、套结、堆放为止，无技能要求就能操作。一个口袋 8-11 秒，就可以完成口袋的设定、折边与缝制的循环作业只需要一台机器

Automatic operation process of automatic bag-sticking machine

One person can complete ironing, sewing, socket connection, material receiving, and bird's nest prevention.
Realize a series of pocket process automation, improve production efficiency and quality at the same time. From the pocket folding, cutting, positioning settings, ordering pockets, knots, stacking, no technical requirements can be operated. A pocket can be set, folded and sewed in 8-11 seconds with only one machine.

技术参数 Technical parameters

机头缝制速度 Head sewing speed	3000st/min
搭载机头 Equipped with handpiece	281
机针 Machine needle	DP*1
缝制线迹编程 Sewing stitch programming	操作屏输入方式 Input mode of operation screen
线迹编程储存容量 Line Programming Storage Capacity	最多可储存花样999种 Up to 999 kinds of patterns can be stored
针距 Stitch distance	1.0mm-3.5mm
压脚上升高度 Pressure foot rising height	60mm
缝制口袋范围 Sewing pocket range	X方向50mm-220mm Y方向50mm-220mm X direction 50mm-220mm Y direction 50mm-220mm
缝制口袋速度 Speed of sewing pockets	6-10秒/个 6-10 seconds per second.
折袋方式 Folding method	7个方向的双气缸折刀同时工作进行折袋 Double cylinder folder in 7 directions works simultaneously to fold bags
缝制工作方式 Sewing methods	折袋和缝制同时进行，自带断线保护功能 Bag folding and sewing are carried out at the same time, with protective function of broken thread
送布驱动方式 Feeding Drive Mode	台湾台达伺服电机驱动 (750w) Taiwan DELTA servo motor drive (750w)
电源 Power Supply	AC 220V
气压、空压消费量 Air Pressure and Air Pressure Consumption	0.5Mpa (5kg/cm ²), 22dm ³ /min
重量 Weight	650KG



K33-05-HM | 平机款贴袋机 (适合薄料) Flat machine type patching machine (suitable for thin)

全自动免烫贴袋机适用于任何一种外饰的口袋，侧重于牛仔裤、衬衫、休闲裤、军裤及工作服等类似缝制品。
自动免烫折袋机折构，选用了气缸全自动折边技术；提高了生产效率；使口袋的折边不在需要熨斗烫台，节省人工。
内压框自动收缩机构，使口袋的边缘线迹变化不在有局限性。内压框增加了可以更换调节的功能。
自动收料机构，机器缝制结束后，采用了自动机械手进行收料，可对缝品整齐摆放。

Fully automatic non-ironing bag sticker is suitable for any kind of exterior pockets, focusing on jeans, shirts, casual pants, military trousers and work clothes and other similar sewing products.
The folding mechanism of the automatic non-iron folding bag machine adopts the cylinder automatic folding technology, which improves the production efficiency and saves labor by eliminating the need for ironing table for folding pockets.
The automatic shrinkage mechanism of the internal pressure frame makes the change of the pocket's edge trace not limited. The internal pressure frame adds the function of replaceable adjustment.
Automatic feeding mechanism, after machine sewing, the automatic manipulator is used for feeding, and the sewing products can be placed neatly.

传统工艺操作流程

6-8 个工人
熟练操作工至少 3 人

烫袋 ▶ 堆放 ▶ 缝制 ▶ 套接 ▶ 剪线头

Traditional process operation flow

6-8 workers
At least 3 skilled operators

Ironing bag ▶ Stacking ▶ Sew ▶ Socket connection ▶ Scissors

全自动贴袋机自动化操作流程

一个人一次性完成免烫缝制套接收料防鸟巢。
实现口袋一系列工序自动化，在提高生产效率同时，提高品质。
实现从口袋折边、裁片的定位设置、订口袋、套结、堆放为止，无技能要求就能操作。一个口袋 8-11 秒，就可以完成口袋的设定、折边与缝制的循环作业只需要一台机器

Automatic operation process of automatic bag-sticking machine

One person can complete ironing, sewing, socket connection, material receiving, and bird's nest prevention.
Realize a series of pocket process automation, improve production efficiency and quality at the same time. From the pocket folding, cutting, positioning settings, ordering pockets, knots, stacking, no technical requirements can be operated. A pocket can be set, folded and sewed in 8-11 seconds with only one machine.

技术参数 Technical parameters

机头缝制速度 Head sewing speed	3000stj/min
搭载机头 Equipped with handpiece	800A
机针 Machine needle	DP*5-DB*1
缝制线迹编程 Sewing stitch programming	操作屏输入方式 Input mode of operation screen
线迹编程储存容量 Line Programming Storage Capacity	最多可储存花样999种 Up to 999 kinds of patterns can be stored
针距 Stitch distance	1.0mm-3.5mm
压脚上升高度 Pressure foot rising height	60mm
缝制口袋范围 Sewing pocket range	X方向50mm-220mm Y方向50mm-220mm X direction 50mm-220mm Y direction 50mm-220mm
缝制口袋速度 Speed of sewing pockets	6-10秒/个 6-10 seconds per second.
折袋方式 Folding method	7个方向的双气缸折刀同时工作进行折袋 Double cylinder folder in 7 directions works simultaneously to fold bags
缝制工作方式 Sewing methods	折袋和缝制同时进行，自带断线保护功能 Bag folding and sewing are carried out at the same time, with protective function of broken thread
送布驱动方式 Feeding Drive Mode	台湾台达伺服电机驱动(750w) Taiwan DELTA servo motor drive (750w)
电源 Power Supply	AC 220V
气压、空压消费量 Air Pressure and Air Pressure Consumption	0.5Mpa (5kg/cm ²)、22dm ³ /min
重量 Weight	650KG



K33-06-HM | 平机款贴袋机 (适合薄料)
Flat machine type patching machine
(suitable for thin)

满足不同面料需求, 比如棉麻、牛仔、针织布料等。
自动折边、点位、套结、花样、剪线、收料一次完成。
可应用于各个领域的口袋车缝, 如牛仔裤、休闲裤、工作服、睡衣、T 恤衫等。
关键部件采用国际知名厂家产品, 坚固耐用, 维护成本极低。
采用精密电机平移送料, 保证送料精确、平稳。
工作效率极高, 保守估算一台机可抵 6 人的工作量。

Meet the needs of different fabrics, such as cotton, linen, jeans, knitted fabrics, etc.
Automatic hemming, point positioning, tying, pattern cutting and material collection are completed at one time.
Can be applied to pocket sewing in various fields, such as jeans, casual pants, overalls, pajamas, T-shirts, etc.
The key components are made of internationally famous products, which are strong and durable and have very low maintenance cost.
The precise motor is adopted to translate and feed, ensuring accurate and stable feeding.
The work efficiency is extremely high, and it is conservatively estimated that one machine can cover the workload of six people.

传统工艺流程

6-8 个工人
熟练操作工至少 3 人

烫袋 ▶ 堆放 ▶ 缝制 ▶ 套接 ▶ 剪线头

Traditional process operation flow

6-8 workers

At least 3 skilled operators

Ironing bag ▶ Stacking ▶ Sew ▶ Socket connection ▶ Scissors

全自动贴袋机自动化操作流程

一个人一次性完成免烫缝制套接收料防鸟巢。
实现口袋一系列工序自动化, 在提高生产效率同时, 提高品质。
实现从口袋折边、裁片的定位设置、订口袋、套结、堆放为止, 无技能要求就能操作。一个口袋 8-11 秒, 就可以完成口袋的设定、折边与缝制的循环作业只需要一台机器

Automatic operation process of automatic bag-sticking machine

One person can complete ironing, sewing, receiving material, bird's nest prevention, etc. at one time.
Realize a series of pocket process automation, improve production efficiency and quality at the same time. From the pocket folding, cutting, positioning settings, ordering pockets, knots, stacking, no technical requirements can be operated. A pocket can be set, folded and sewed in 8-11 seconds with only one machine.

技术参数 Technical parameters

机头缝制速度 Head sewing speed	3000st/ min
搭载机头 Equipped with handpiece	7300
机针 Machine needle	DP*5-DB*1
缝制线迹编程 Sewing stitch programming	操作屏输入方式 Input mode of operation screen
线迹编程储存容量 Line Programming Storage Capacity	最多可储存花样999种 Up to 999 kinds of patterns can be stored
针距 Stitch distance	1.0mm- 3.5mm
压脚上升高度 Pressure foot rising height	60mm
缝制口袋范围 Sewing pocket range	X方向50mm-220mm Y方向50mm-220mm X direction 50mm-220mm Y direction 50mm-220mm
缝制口袋速度 Speed of sewing pockets	6-10秒/个 6-10 seconds per second.
折袋方式 Folding method	7个方向的双气缸折刀同时工作进行折袋 Double cylinder folder in 7 directions works simultaneously to fold bags
缝制工作方式 Sewing methods	折袋和缝制同时进行, 自带断线保护功能 Bag folding and sewing are carried out at the same time, with protective function of broken thread
送布驱动方式 Feeding Drive Mode	台湾台达伺服电机驱动 (750w) Taiwan DELTA servo motor drive (750w)
电源 Power Supply	AC 220v
气压、空压消费量 Air Pressure and Air Pressure Consumption	0.5Mpa (5kg/cm ²) 、 22dm ³ /min
重量 Weight	650KG



K33-07-HM | 平机款贴袋机 (适合薄料)
Flat machine type patching machine
(suitable for thin)

全自动免烫贴袋机适用于任何一种外饰的口袋，侧重于牛仔裤、衬衫、休闲裤、军裤及工作服等类似缝制品。
自动免烫折袋机折机构，选用了气缸全自动折边技术；提高了生产效率；使口袋的折边不在需要熨斗烫台，节省人工。
内压框自动收缩机构，使口袋的边缘线迹变化不在有局限性。内压框增加了可以更换调节的功能。
自动收料机构，机器缝制结束后，采用自动机械手进行收料，可对缝品整齐摆放。

Fully automatic non-ironing bag sticker is suitable for any kind of exterior pockets, focusing on jeans, shirts, casual pants, military trousers and work clothes and other similar sewing products.
· The folding mechanism of the automatic non-iron folding bag machine adopts the cylinder automatic folding technology, which improves the production efficiency and saves labor by using ironing table for folding pockets.
The automatic shrinkage mechanism of the internal pressure frame makes the change of the pocket's edge trace not limited. The internal pressure frame adds the function of replaceable adjustment.
Automatic feeding mechanism, after machine sewing, the automatic manipulator is used for feeding, and the sewing products can be placed neatly.

传统工艺流程

6-8 个工人
熟练操作工至少 3 人

烫袋 ▶ 堆放 ▶ 缝制 ▶ 套接 ▶ 剪线头

Traditional process operation flow

6-8 workers
At least 3 skilled operators

Ironing bag ▶ Stacking ▶ Sew ▶ Socket connection ▶ Scissors

全自动贴袋机自动化操作流程

一个人一次性完成免烫缝制套接收料防鸟巢。
实现口袋一系列工序自动化，在提高生产效率同时，提高品质。
实现从口袋折边、裁片的定位设置、订口袋、套结、堆放为止，无技能要求就能操作。一个口袋 8-11 秒，就可以完成口袋的设定、折边与缝制的循环作业只需要一台机器

Automatic operation process of automatic bag-sticking machine

One person can complete ironing, sewing, socket connection, material receiving and anti-bird's nest.
Realize a series of pocket process automation, improve production efficiency and quality at the same time. From the pocket folding, cutting, positioning settings, ordering pockets, knots, stacking, no technical requirements can be operated. A pocket can be set, folded and sewed in 8-11 seconds with only one machine.

技术参数 Technical parameters

机头缝制速度 Head sewing speed	3000st/min
搭载机头 Equipped with handpiece	9000B
机针 Machine needle	DP*5-DB*1
缝制线迹编程 Sewing stitch programming	操作屏输入方式 Input mode of operation screen
线迹编程储存容量 Line Programming Storage Capacity	最多可储存花样999种 Up to 999 kinds of patterns can be stored
针距 Stitch distance	1.0mm-3.5mm
压脚上升高度 Pressure foot rising height	60mm
缝制口袋范围 Sewing pocket range	X方向50mm-220mm Y方向50mm-220mm Xdirection 50mm-220mm Y direction 50mm-220mm
缝制口袋速度 Speed of sewing pockets	6-10秒/个 6-10 seconds per second.
折袋方式 Folding method	7个方向的双气缸折刀同时工作进行折袋 Double cylinder folder in 7 directions works simultaneously to fold bags
缝制工作方式 Sewing methods	折袋和缝制同时进行，自带断线保护功能 Bag folding and sewing are carried out at the same time, with protective function of broken thread
送布驱动方式 Feeding Drive Mode	台湾台达伺服电机驱动 (750w) Taiwan DELTA servo motor drive (750w)
电源 Power Supply	AC 220V
气压、空压消费量 Air Pressure and Air Pressure Consumption	0.5Mpa (5kg/cm2)、22dm3/min
重量 Weight	650KG



K33-08-HM 国产花样机机头 (适合厚料)

Domestic pattern machine head (suitable for thick materials)

满足不同面料需求，比如棉麻、牛仔、针织布料等。
自动折边、点位、套结、花样、剪线、收料一次完成。
·可应用于各个领域的口袋车缝，如牛仔裤、休闲裤、工作服、睡衣、T恤衫等。
关键部件采用国际知名厂家产品，坚固耐用，维护成本极低。
采用精密电机平移送料，保证送料精确、平稳。
工作效率极高，保守估算一台机可抵6人的工作量。

Meet the needs of different fabrics, such as cotton, linen, jeans, knitted fabrics, etc.
Automatic hemming, point positioning, tying, pattern cutting and material collection are completed at one time.
Can be applied to pocket sewing in various fields, such as jeans, casual pants, overalls, pajamas, T-shirts, etc.
The key components are made of internationally famous products, which are strong and durable and have very low maintenance cost.
The precise motor is adopted to translate and feed, ensuring accurate and stable feeding.
The work efficiency is extremely high, and it is conservatively estimated that one machine can cover the workload of six people.
The work efficiency is extremely high, and it is conservatively estimated that one machine can cover the workload of six people.

传统工艺流程

6-8 个工人
熟练操作工至少 3 人

烫袋 ▶ 堆放 ▶ 缝制 ▶ 套接 ▶ 剪线头

Traditional process operation flow

6-8 workers

At least 3 skilled operators

Ironing bag ▶ Stacking ▶ Sew ▶ Socket connection ▶ Scissors

全自动贴袋机自动化操作流程

一个人一次性完成免烫缝制套接收料防鸟巢。
实现口袋一系列工序自动化，在提高生产效率同时，提高品质。
实现从口袋折边、裁片的定位设置、订口袋、套结、堆放为止，无技能要求就能操作。一个口袋 8-11 秒，就可以完成口袋的设定、折边与缝制的循环作业只需要一台机器

Automatic operation process of automatic bag-sticking machine

One person can complete the ironing, sewing, stitching, material receiving and anti-bird's nest.
Realize a series of pocket process automation, improve production efficiency and quality at the same time. From the pocket folding, cutting positioning settings, ordering pockets, knots, stacking, no technical requirements can be operated. A pocket can be set, folded and sewed in 8-11 seconds with only one machine.

技术参数 Technical parameters

机头缝制速度 Head sewing speed	3000sti/min
搭载机头 Equipped with handpiece	311
机针 Machine needle	DP*7-DP*5
缝制线迹编程 Sewing stitch programming	操作屏输入方式 Input mode of operation screen
线迹编程储存容量 Line Programming Storage Capacity	最多可储存花样999种 Up to 999 kinds of patterns can be stored
针距 Stitch distance	1.0mm-3.5mm
压脚上升高度 Pressure foot rising height	80mm
缝制口袋范围 Sewing pocket range	X方向50mm-260mm Y方向50mm-220mm X direction 50mm-260mm Y direction 50mm-220mm
缝制口袋速度 Speed of sewing pockets	6-10秒/个 6-10 seconds per second.
折袋方式 Folding method	7个方向的双气缸折刀同时工作进行折袋 Double cylinder folder in 7 directions works simultaneously to fold bags
缝制工作方式 Sewing methods	折袋和缝制同时进行，自带断线保护功能 Bag folding and sewing are carried out at the same time, with protective function of broken thread
送布驱动方式 Feeding Drive Mode	台湾台达伺服电机驱动(750w) Taiwan DELTA servo motor drive (750w)
电源 Power Supply	AC 220V
气压、空压消费量 Air Pressure and Air Pressure Consumption	0.5Mpa (5kg/cm2)、22dm3/min
重量 Weight	650KG



K33-09-HM | 平机款贴袋机 (适合薄料)
Flat machine type patching machine
(suitable for thin)

烫袋 堆放 缝制 套接 剪线头
全自动免烫贴袋机适用于任何一种外饰的口袋，侧重于牛仔裤、衬衫、休闲裤、军裤及工作服等类似缝制品。
自动免烫折袋机折构，选用了气缸全自动折边技术；提高了生产效率；使口袋的折边不在需要熨斗烫台，节省人工。
内压框自动收缩机构，使口袋的边缘线迹变化不在有局限性。内压框增加了可以更换调节的功能。
自动收料机构，机器缝制结束后，采用了自动机械手进行收料，可对缝品整齐摆放。

Fully automatic non-ironing bag sticker is suitable for any other similar sewing products, shirts, casual pants, military trousers and work clothes and other similar sewing products. The folding mechanism of the automatic non-iron folding bag machine adopts the ironing table for folding pockets. The automatic shrinkage mechanism of the internal pressure frame makes the change of the pocket edge trace not limited. The internal pressure frame adds the function of replaceable adjustment. Automatic feeding mechanism, after machine sewing, the automatic manipulator is used for feeding, and the sewing products can be placed neatly.

传统工艺流程

6-8 个工人
熟练操作工至少 3 人

烫袋 ▶ 堆放 ▶ 缝制 ▶ 套接 ▶ 剪线头

Traditional process operation flow

6-8 workers
At least 3 skilled operators

Ironing bag ▶ Stacking ▶ Sew ▶ Socket connection ▶ Scissors

全自动贴袋机自动化操作流程

一个人一次性完成免烫缝制套接收料防鸟巢。
实现口袋一系列工序自动化，在提高生产效率同时，提高品质。
实现从口袋折边、裁片的定位设置、订口袋、套结、堆放为止，无技能要求就能操作。一个口袋 8-11 秒，就可以完成口袋的设定、折边与缝制的循环作业只需要一台机器

Automatic operation process of automatic bag-sticking machine

One person can complete ironing, sewing, socket connection, and receiving material without bird's nest.
Realize a series of pocket process automation, improve production efficiency and quality at the same time. From the pocket folding, cutting, positioning settings, ordering pockets, knots, stacking, no technical requirements can be operated. A pocket can be set, folded and sewed in 8-11 seconds with only one machine.

技术参数 Technical parameters

梭车转速 Head sewing speed	3000st/ min
配备梭头 Equipped with handpiece	9000C
梭针 Machine needle	DP*5-DB*1
缝制程序 Sewing stitch programming	所储缝制程序 In put mode of operation screen
线程序存储容量 Line Programming Storage Capacity	存储缝制程序 999 套 Up to 999 kinds of patterns can be stored
间距 Stitch distance	1.0mm-3.5mm
压脚升起高度 Pressure foot rising height	23mm
缝制口袋范围 Sewing pocket range	X 方向 300mm Y 方向 200mm X direction 300mm Y direction 200mm
缝制口袋速度 Speed of sewing pockets	6-10 套/仔 6-10 seconds per second.
折叠方法 Folding method	7 仔 7 个方向同时工作 Double cylinder folder in 7 directions works simultaneously to fold bags
缝制方法 Sewing methods	折叠和缝制同时进行，具有断线保护功能 Bag folding and sewing are carried out at the same time, with protective function of broken thread
送料驱动模式 Feeding Drive Mode	台湾德力伺服电机驱动 (750w) Taiwan DELTA servo motor drive (750w)
电源 Power Supply	AC 220V
气压及耗气量 Air Pressure and Air Pressure Consumption	0.5Mpa (5kg/cm2) 2.2dm3/min
重量 Weight	650KG



K33-10-HM | 贴袋机 Flat machine type patching machine

无需热烫，通过冷折模具一次缝制成型
自动送料、折料、缝制无间断连续操作
适用于多种形状的口袋；
自动收料系统；
无技能操作要求。
每台 8 小时生产 1500 条左右。

No need heating, from cold mold to sewing molding;
Automatic feeding, folding, sewing without intermittent continuous operation;
Suitable for a variety of shape pockets;
Automatic feeding system;
Unskilled operation requirements.
1500 pants/8 hrs.

技术参数 Technical parameters

梭头缝合速度 Head sewing speed	3000st/min
配备梭头 Equipped with handpiece	430HS
梭针 Machine needle	DP*17-DP*5
缝制线迹编程 Sewing stitch programming	所储缝制线迹 Input mode of operation screen
线迹编程存储容量 Line Programming Storage Capacity	存储缝制线迹 999 种 Up to 999 kinds of patterns can be stored
线迹间距 Stitch distance	1.0mm-3.5mm
压脚代吹能升 Ressure foot rising height	60mm
缝制口袋范围 Sewing pocket range	X 喂料 50mm-220mm Y 喂料 100mm-200mm X direction 50mm-220mm Y direction 100mm-200mm
缝制口袋速度 Speed of sewing pockets	6-10 袋/秒 6-10 seconds per second.
折叠方法 Folding method	7 仔喂料管 7 方向喂料 7 方向同时工作 7 directions works simultaneously to fold bags
缝制方法 Sewing methods	折叠和缝制同时进行，具有断线保护功能 Bag folding and sewing are carried out at the same time, with protective function of broken thread
送料驱动模式 Feeding Drive Mode	台湾德力塔伺服电机驱动 (750w) Taiwan DELTA servo motor drive (750w)
电源 Power Supply	AC220V
气压及耗气量 Air Pressure and Air Pressure Consumption	0.5Mpa (5kg/cm2) Δ 22dm3/min
重量 Weight	650KG



J34-01MJ | 多功能自动门襟机 Multi-functional automatic trouser-fly setting machine

稳定性：三菱原装机头和电控，加改装优化功能完美结合。
自动化：自动车缝，自动送料，自动收料
针迹距：可自行设定每段线迹的针距
简单化：采用触摸屏可自行设定 J 型线迹花样，满足任何服饰的要求
效率化：按款式复杂程度，每人每天 (8 小时) 可做 3500 条裤子
最大尺寸：最大尺寸可达 258x130mm
自动化：代替熟练工傻瓜式操作使用，简单培训即可操作，提高品质
适用于：牛仔裤，休闲装，工作服的门襟 J 字缝；

Stability: Mitsubishi original head and electronic control. Combination of modifications and optimizing functions.
Automation: Automatic sewing, feeding and collection.
Needle gauge: Can be set up on your own will
Simplify: Sewing pattern "J" type can be set by touchable screen, available for all kinds of garments.
Efficiency: Due to the complexity of the sewing patterns, 3500 pairs of pants can be done per day per person (8 working hours)
Sewing size: The maximum sizes can reach 258*130mm
Automation: One skilled worker, easy operation, simple training, improved quality
Applicable to the placket sewing in "J" type of denim pants, casual clothing, and work uniforms.

技术参数 Technical parameters

缝制速度 Sewing Speed	最高 2700rpm Max 2700rpm
采用机针 Needle	DP*5/DP*17 DPX5/DPX17
花样储存 Pattern data storage	999 个 999 pcs
供油方式 Oiling	微油 Minimum oil
屏幕语言 Language	中英文 Chinese and English



K35-01MJ 链式
K36-01MJ 锁式 | 自动卷袋口机
Automatic pocket mouthcurling Machine

自动化：隐藏式卷边，卷边宽度可以调节、针距 1/8 1/4 3/8 等可以调换。
效率化：是传统工序 3 倍，可节省 2 人、自动卷袋口机 10 小时 8000 个。
性价比：按照人均月工资 3000 元，全年可节省 3000x12x2=72000 元
自动化：代替熟练工傻瓜式操作使用，简单培训即可操作，多道工序一次缝制。
用于：牛仔休闲裤口袋卷袋口用

Automation: No curling edge exposed, and the width of curling edge is adjustable, needle gauge 1/8, 1/4, 3/8 can also be replaced.
Efficiency: The efficiency is increased by triple times compared with the traditional procedure, which means 2 labors can be saved.
Automatic pocket mouth-curling machine can produce 8000 pockets per 10 hours
Cost performance: monthly wage is 3000RMB, 3000*12*2=72000RMB can be saved each year.
Automation: One skilled worker, easy operation, simple training, multi sewing processes at one time
Applicable pocket of jeans casual pants.

技术参数 Technical parameters

缝制工序 Sewing process	卷口袋 Curling pocket
最高速度 Max speed	4000rpm
标准针距 Standard needle gauge	1/4" (6.4mm)
针迹长度 Stitch length	1.4mm-4mm
使用机针 Needle	TVX7
卷边宽度 Curling width	可调节 adjustable
机器尺寸 Machine size	1062x1000x1240mm(LxWxH)
机器重量 Machine weight	190KG



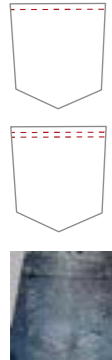
K63922-D4 | 自动辮脚单元
Automatic bottom hemming unit

锁链互换：通过更换旋梭和弯针实现两种线迹，满足不同工艺需要
圆筒底座：筒式设计更加适合裤脚部位的缝制。
同步送料：上下拖轮和针送料，避免了接头密针现象。
自动化：具有自动抬压脚、自动剪线、自动勾线、自动卷边筒。
加固功能：具备缝制结束后密针防止水洗脱线。

Interchange between lockstitch and chainstitch: Realizes two different stitches changing the hook and looper to meet the needs of different processes.
Cylinder bed: More suitable for sewing hemming on trousers.
Synchronous feeding: upper-lower puller and needle feeding prevent the dense stitch on joint.
Automation: Presser foot lifter, trimmer, sweep thread and curling folder.
Reinforce function: Dense stitch when ending to prevent off-line.

技术参数 Technical parameters

缝制速度 Max speed	最高4000针/分 4000rpm
卷筒卷边宽度 Width of hemming	12.7mm
圆筒底座圆周 Perimeter of cylinder bed	23CM
采用机针 Needle	锁式PDX5 链式DVx57 Lockstitch: PDX5, chainstitch: DVX57
送料方式 Feeding	上下滚轮及针复合送料方式 Upper and lower puller, needle feeding



K34-11 | 自动卷后袋口单元
Automatic unit for back pocket hemming

高质量的双针锁式线迹机头或者双针链式线迹机头 (根据需要可以互换)
两种机头都配备变频直驱电机
更换机头约用时 20-30 分钟
标准针位 6.4 毫米
可调折边器, 出厂折边宽度 10 毫米
步进电机驱动的送料皮带
智能收料装置, 根据收料的口袋高度相应调整收料位置;
高质量的剪线装置 (前后都剪)
西门子控制系统, 带彩色触摸屏
通过触摸屏可以调节程序

生产效率
链式机头每小时可以加工 1600-1800 个口袋
锁式机头每小时可以加工 500 个口袋。
还可以加装自动上料装置。

适用范围
各种面料后袋折边, 可选择锁式线迹或者链式线迹。

High quality chain- or Lock-stitch (Changeable as per requirement)
Both heads equipped with Hoshing direct drive motors
Duration of changing sewing head, appr. 20 - 30 minutes
Standard needle gauge 6.4mm
Adjustable folder, 10mm when leave factory.
Transport belt over stepper motor
Intelligent stacker, sinking accordingly stacked pockets height
High quality scissor type threat trimmer (Cutting front and back)
Siemens control system, with color touch screen
Unit fully programmable over touch scree Easy to use adjustment program

Efficiency
K6011-C can hem 1600-1800 pockets per hour.
K6011-L can hem 500 pockets per hour.
PS:Optional device for loading pockets

Applications
Applicable for the back pocket hemming of different fabric, the seam can be lockstitch or chainstitch.



K6011-C-PS



链式线迹机头
Movable and changeable machine head



抓料装置
Grab device

技术参数 Technical parameters

型号/ Model	K34-11-C	K34-11-L	K34-11-CL
采用机头/ Machine head	双针链式线迹 Double needle chain stitch	双针锁式线迹 Double needle lock and chain stitch	双针锁式和链式线迹 Double needle lock and chain stitch
缝纫工序/ Sewing process	自动卷后袋口/ back pocket hemming		
最大缝速/ Max. sewing speed	3000rpm	2200rpm	3000rpm or 2200rpm
针位/ Needle gauge	1/4" (6.4mm)		
机针规格/ Needle system	TV×7	DP×5	TV×7 or Dp×5
卷边宽度/ Hemming width	可调/ Adjustable 10mm		
电源/ Power supply	220v, 50/60Hz		
功率/ Power	1Kw		
压缩空气压力/ Air pressure	6 bar		
机器尺寸/ Machine size	1350X1100mm(LXW)		
重量/ Weight	190kg		



K9041 翻转压脚
K9042 侧滑压脚

自动皮牌机
Programmable label setter with turning clamp

起缝点和末缝点处于标签的中上位置；
通过专业的压脚和模板制作，可以非常精确的缝制各种标牌。
特殊设计的缝制平台可为缝制物料提供适合的缝制位置，操作方便。

Start and end point is on the middle-top from the label.
With the help of special clamp and holders,the labels can be attached on material precisely.
Start and end point is on the middle-top from the label.



技术参数 Technical parameters

型号/Model	K9041	K9042
压板形式/Clamp type	Turning type	Side-sliding type
缝纫范围/Sewing area	220×100mm	
最高缝速/Max. sewing speed	2700rpm	
产量/Production	900 labels per hour/每小时900个标签(取决于缝料和标签设计/depending on fabric and styles)	
线迹长度/Stitch length	0.05-12.7mm	
压板驱动方式/Clamp driving mode	启动/pneumatic	
压脚高度/Work clamp height	Max.30mm	
扫线装置标准/Wiping device	无/No	标准/Standard
自动剪线/Thread trimmer	标准/Standard	
电压/Power supply	220v,50/60Hz	
功率/Power	1.2kw	
压缩空气压力/Air pressure	6 bar	
机器尺寸/Machine size	1200×750mm	
重量/Weight	160kg	



K2210-XZ 小嘴电子花样机
Small mouth electronic pattern machine

配备优质花样机机头，进口摆梭，自动剪线
小嘴长臂设计，尤其适合牛仔裤腿装饰缝制或者补洞等特殊用途。

High quality pattern sewer with Japan shuttle hook and automatic thread trimmer as basic head. Free arm design,can realize decorative sewing on finished trousers

适用范围
主要用于牛仔裤腿装饰缝制或者补洞等特殊用途，也可以用于休闲裤、雪地靴、高尔夫球袋等图案及商标缝制。

Applications
It is programmable pattern sewer which used on small sewing area,mainly sewing decorative stitch on finished trouser legs,snow boots,golf bags and attaching brand lags on them.

技术参数 Technical parameters

型号/Model	K2210-KZ	自动剪线标准/Thread trimmer	标准/standard
夹裤装置/Clamping device	有/yes	电压/Power supply	220v,50/60Hz
缝纫范围/Sewing area (XxY)	100×100mm or 80×100mm	功率/Power	550w
最高缝速/Max. sewing speed	2700rpm	压缩空气压力/Air pressure	6 bar
线迹长度/Stitch length	0.05-12.7mm	机器尺寸/Machine size	1180×1150mm
压板驱动方式/Clamp driving mode	气动/pneumatic	重量/Weight	160kg
压脚高度/Work clamp height	max.30mm		
扫线装置标准/Wiping device	标准/standard		



K254-ZD 双针自动订襻机
Double needle belt loop sewing machine

剪裤襻、套结、搬运等工序节约 4 人，平车加固工节约 4 人，人均月工资 3200 元，生产效率提升 70%。

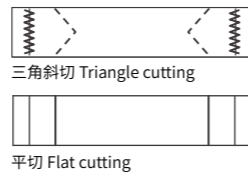
实例分析
自动化生产工艺
剪、折、缝、套结等一人完成
12 秒一条 5 个裤襻裤子 / 人 全年可节约人工成本
3200×12×7=268000RMB
10 小时产量 1800-2000 条裤子 / 人

规格
最高缝纫速度 2,700 rpm
裤带宽度 7-20mm
加固缝裤带长度 49.0-75mm
重量 245kg
电源 AC220V
气压 0.5 Mpa 1.8L/min

This machine streamlines positions of four workers including cutting belt,bar-tacking ,carrying and other four positions of enforcement sewing on normal sewing machine .K254-ZD saves not only the salary of workers ,in average 3200rmb,but also improves 70% efficiency.

Cases
Automatic Production
Cut, folding, sewing and tacking can be done by one worker.
A pair of trousers with 5 pants loops in 12 seconds
Monthly salary for a worker is RMB 3,200, the cost of labors can be reduced by 3200×12×7=RMB 268800 in a whole year.
10 hours production 1800-2000pants /person

Specification
Highest sewing speed 2700rpm
Belt width 7-20mm
Belt length 49.0mm-75mm
Weight 245kg
Power AC220V
Air pressure 0.5 Mpa 1.8L/min



结构简单操作方便
双针自动订襻机可用于牛仔裤和休闲裤裤耳的一次成型，设备操作简单易学，省时省力。自动筛选、切断、折边及套结等工序一次性完成，并且具有机械结构简单，操作方便调整灵活、生产效率高等优点。



自动筛选切除废料
独特的自动检测装置设计可以筛选出裤襻接头处的废料，并且实现了自动筛选切除。



操作系统快速简便
拥有快捷的操作系统，完全可视化的人机界面。可直接编辑花样，并集合了数据的管理和可视化触摸屏操作优点。

特点
对外旋梭针位尺寸、裤襻长度、裤襻收位、废料检测的数据调整，就可自动完成裤襻长度的调整，无需机械部位调整。
调整 X&Y 方向参数即可完成裤襻宽度调节，省时易操作。
将套结参数、人字缝参数等调整，即可轻松完成个性化花样编辑的需求。



标准裤襻线迹图 Standard belt loop line graph



Simple structure ,easy operation
It is a self-developed machine which can be used for one-time forming of jeans and casual pants ears. It is easy to operate, saving time and effort. Processes of automatic screening, cutting, folding and tacking are completed in one time. It holds advantages of simple mechanical structure, convenient operation, flexible adjustment, high production efficiency.

Simple structure ,easy operation
It is a self-developed machine which can be used for one-time forming of jeans and casual pants ears. It is easy to operate, saving time and effort. Processes of automatic screening, cutting, folding and tacking are completed in one time. It holds advantages of simple mechanical structure, convenient operation, flexible adjustment, high production efficiency. Automatic screening and removing waste materials
The unique automatic detection device is designed to filter out wastes at pants loop joints, and realizes automatic screening and removing.

Rapid and simple operating system
With visible human-machine interface and convenient operating system,it can program the patterns directly.The operation combined data management with visual touch screen.

Operational Characters
Adjusting the data of needle position and length of outer hook ,the length data of belt loop , ending position data of beltloop and wastematerial detecting data,the machine automatically adjusts the length of the belt loop without labor to adjust mechanic parts. You can adjust the width of the belt loop according to the editing of X,Y direction paramameters,which saves time and labor.
Customized program editing can be realized easily via the adjustment of bartack parameters and zigzag sewing parameters.



N-LJ/ACS01

自动上圆领机
Automatic round collar
machine

适用于 T 恤衫圆领、松紧带腰头、螺纹制品圆形腰头
Suitable for T-shirt round neck, elastic waistband, threaded products round waistband



气动扩张功能、缝制更均匀、操作更方便、易上手，最大扩张 1.45 米
Pneumatic expansion function, more uniform sewing, more convenient operation, easy to use, the maximum expansion of 1.45 meters



气动滚轮扩张器，轻松上料
Pneumatic roller expander for easy feeding



自动剪线装置，无需熟练工
Automatic wire cutting device, no skilled labor required



拉筒式气动卡位装置让缝迹左右对齐圆领宽度一致
The tubble-type pneumatic clamp allows the seam to be aligned to the left and right of the collar to be the same width



自动收费料口，保持缝制环境干净整洁
Automatic charging port to keep the sewing environment clean and tidy

技术参数 Technical parameters

机器型号 Machine model	N-LJ/ACS01
交流电压 AC voltage	200~240V
额定气压 Rated air pressure	> 0.5 Mpa
缝制周长范围 Neckline perimeter	20 ~ 140cm
罗纹宽度 Neckline width	1 ~ 5 cm
最高缝制速度 Maximum sewing speed	6000 rpm
机针型号 Needle type	DC x 27
缝制效率 Sewing efficiency	10 秒 / 件 (50cm 周长测试) 10 seconds / piece (50cm perimeter test)
包装尺寸 Package size	70x130x130cm



N-LJ/C-11 | 自动上螺纹袖口机
Automatic threading cuff machine

适用于针织套装及单衣单裤、卫衣、保暖内衣裤、童装等上圆筒袖口、脚口罗纹。
Suitable for knitted suits and singletons, hoodies, warm underwear, children's clothing and other cylindrical cuffs, foot ribs



上脚口罗纹 Top rib



上圆筒袖口罗纹 Top cylinder cuff ribbing

左右袖口循环缝制，自动剪线，止口匀称，线迹均匀。
Left and right cuff circular sewing, automatic thread cutting, stop symmetrical, even stitch.



前后布牙设计送料更均匀
Front and rear teeth design more uniform feed



前后吸废料设计工作台更清洁
The front and rear suction scrap design table is cleaner



按键式中文显示界面，调试简单，易懂易学
Push-button Chinese display interface, debugging is simple, easy to understand and learn



扩张器设计方便调节罗纹松紧度
The expander is designed for easy adjustment of rib tightness

技术参数 Technical parameters

机器型号 Machine model	N-LJ/C-11
电源 Voltage	220~240V/50HZ
功率 Power	400~550W
气压 Air pressure	0.4~0.5Mpa
罗纹宽度 Cuff width	3.5~8cm
罗纹周长 Cuff perimeter	16cm~32cm
纯缝制时间 / 个 Sewing time	6~9 秒 seconds
生产效率 Production	240~350 个 / 小时 pcs/hour



N-C-13 全自动圆筒下摆机
Fully automatic cylinder hem machine

适用于针织圆筒下摆
Suitable for knitting cylinder hem



成人款 adult



儿童款 Children's



对无股位和多股位可智能选项，自动找股位精确起针与结束位置，无需熟练工，自动调码，自动调节下摆宽度，一人可同时操作两台。
Intelligent options for non-strand position and multi-strand position, automatic finding of strand position accurate start and end position, no skilled workers, automatic code adjustment, automatic adjustment of hem width, one person can operate two at the same time.



自动感应股位装置，使起针和结束在精确位置上
The automatic sensing strand position device makes the needle start and end in precise position



自动收料装置使缝纫工作整洁有序
The automatic receiving device makes the sewing work neat and orderly



左右两个滚轮自动扩张调节下摆宽度
The left and right rollers automatically expand to adjust the hem width



红外线感应自动启缝装置使缝纫更智能更简便
Infrared sensing automatic sewing device makes sewing more intelligent and simple

技术参数 Technical parameters

机器型号 Machine model	N-C-13
电压 voltage	220V
气压 Atmospheric pressure	0.6Mpa
尺寸周长范围 Size perimeter range	童装款 Children's 54-100cm 成人款 adult 76-160cm
机头转速 Head speed	3500-4500 rpm
下摆宽度 Hem width	1.5-3cm
机器长 / 宽 / 高 Machine length/width/height	130/105/155cm
重量 weight	213 kg



N-C-21 自动平板下摆机
Automatic flatbed hem machine

适用于平纹、珠地、拉夹 Polo 衫或其他上衣大身单片下摆、袖口。
Suitable for plain, bead, pull-clip Polo shirt or other shirt large body single piece under the hem, cuff.



自动修边、自动折边，自动缝制、自动收料，断线自动检测，车缝完自动剪线，自动收集废料，低弹丝空车不断线，布料卷边定位、确保脚边平齐。
Automatic trimming, automatic folding, automatic sewing, automatic receiving, automatic detection of broken lines, automatic cutting after sewing, automatic collection of waste materials, low elastic wire empty line, fabric curl positioning, ensure that the foot edge is level.



自动修边、自动折边装置
Automatic trimming and folding device



布料卷边定位、确保脚边平齐
Position fabric hem and make sure foot edge is flush



车缝完自动剪线
Automatic cutting after sewing



自动整齐收料装置
Automatic neat receiving device

技术参数 Technical parameters

机器型号 Machine model	N-C-13
电压 Voltage	交流电 AC 220V-240V
气压 Air Pressure	6KG
尺寸范围 Size Range	长度无限制，脚边宽 1.3~3.5cm No length limit, Hem width 1.3~3.5cm
净尺寸 Measurement	244x 122 x 135 cm (LxWxH)
产能效率 (每小时) Production Capacity(per hour)	400-500pcs



N5011 智能绳头打结机
Intelligent cord end bartack

适用裤腰绳、帽绳封头打结
Pants waist cords, cap cord ends bartack



规格范围 Specification range



适用裤腰绳、帽绳封头打结
Pants waist cords, cap cord ends bartack



烫平机 | Ironing machine

型号	Model	A1
电压	Voltage	220V 50~60Hz
汽压	Air pressure	0.5~0.6MPa
功率	Power	2.5KW
机总尺寸	Dimensions	550*550*1650mm
包装尺寸	Packing size	765*715*1910mm
净重	Net weight	80kg
毛重	Gross weight	122kg
加热元件功率	Heating element power	2.3KW
加热元件温度设置	Temperature setting of heating element	120°C±10°C

技术参数 Technical parameters

型号	Model	N5011
电压	Voltage	220V 50~60Hz
汽压	Air pressure	0.5~0.6MPa
功率	Power	1.5KW
机总尺寸	Dimensions	1720*1030*1800mm
包装尺寸	Packing size	1830*1170*1855mm
净重	Net weight	430kg
毛重	Gross weight	547kg
加热元件功率	Heating element power	0.3KW
加热元件温度设置	Temperature setting of heating element	350°C±10°C



N6021NP

智能穿绳机
Smart rope-wearing machine

适用于平头锁眼、鸟眼绣孔、金属气眼孔的穿绳工艺。
Suitable for flat bottom hole, bird eye embroidery hole, metal air hole string technology.



选购配件 Options

提供童装版组件 (选配) TK01
Provide children's wear edition components (optional) TK01



最小裤腰尺寸 50CM
Minimum waist size 50cm

钢丝规格 (耗材)
Steel wire specification (consumables)



G501
标准款 野鸟钢丝 (大头)
应对7-8MM孔眼
Standard edition
Bending steel wire (large head)
Coping with 7-8mm hole

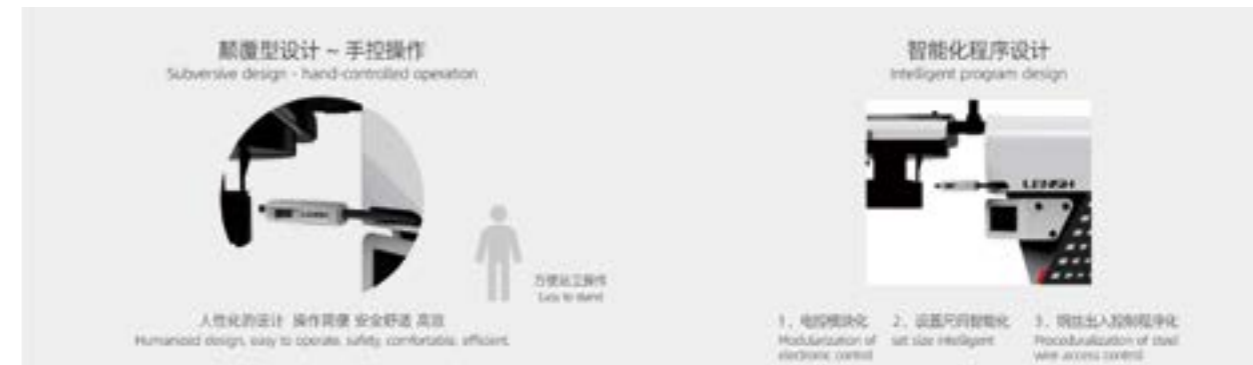


G502
专用款 野鸟钢丝 (小头)
应对5-6MM孔眼
Special edition
Bending steel wire (small head)
Coping with 5-6mm hole

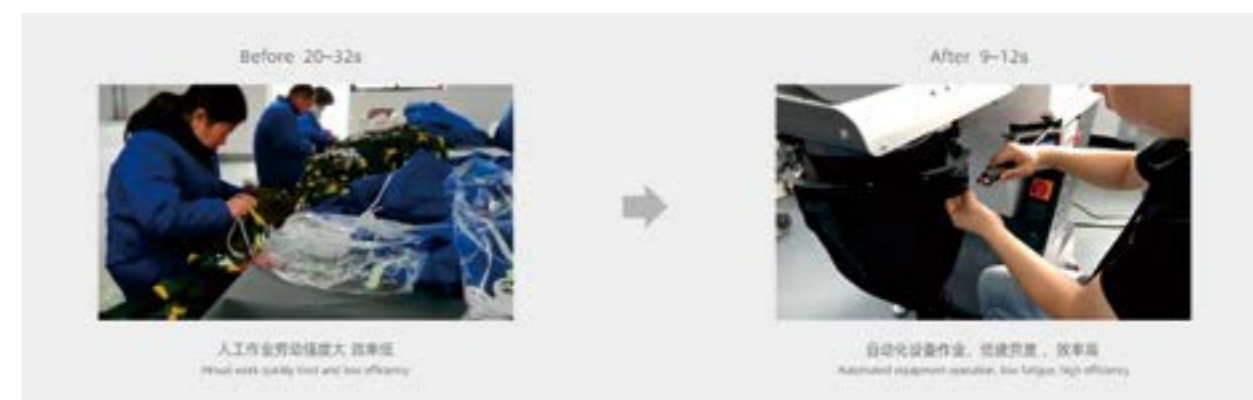


G503
定制款 模具钢丝
应对特殊绳头 (塑料, 金属头)
Custom edition mold steel wire
Coping with special rope head
(plastic metal head)

应对工艺需求, 提供智能化设计
Providing intelligent design for process requirements



效率分析 Efficiency analysis



技术参数 Technical parameters

型号 Model	项目 Project	参数 Parameter
N6021NP	电压 Voltage	220V 50-60Hz
	功率 Power	0.7KW
	外形尺寸 Dimensions	1210*600*1750mm
	装箱尺寸 Packing size	1230*620*1440mm
	净重 Net weight	160kg
	毛重 Gross weight	230kg

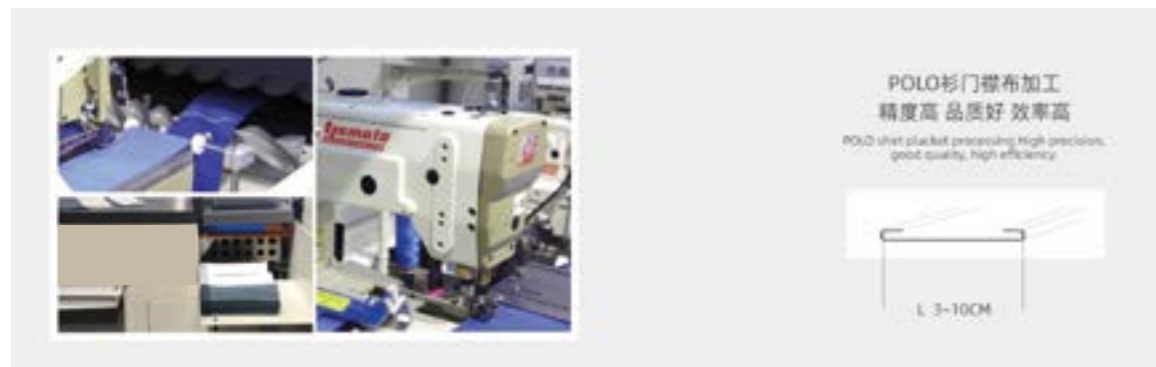


N7031 | 门襟布智能缝制单元
Placket intelligent sewing units

主要应用 POLO 衫门襟智能缝制
The main application of POLO shirt intelligent sewing



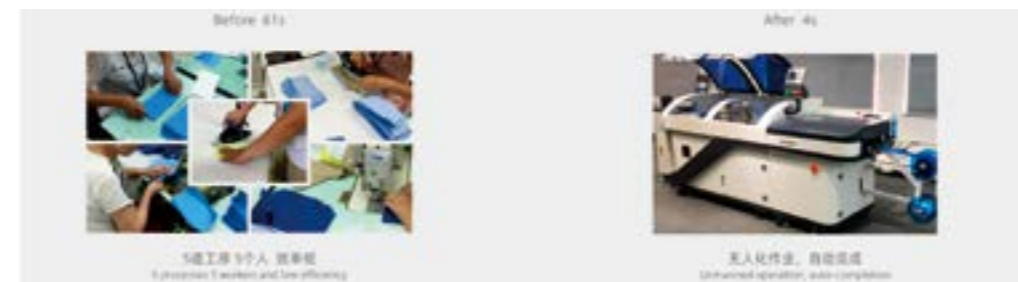
规格范围 Specification range



应对工艺需求, 提供智能化设计
Providing intelligent design for process requirements



效率分析 Efficiency analysis



A3 收料部分 A receiving part

型号	Model	A3
电压	Voltage	220V 50~60Hz
气压	Air pressure	0.5~0.6MPa
功率	Power	0.2KW
外形尺寸	Dimensions	900*800*990mm
装箱尺寸	Packing size	1020*560*1190
净重	Net weight	90kg
毛重	Gross weight	108kg

技术参数 Technical parameters

型号	Model	N7031	备注 Remark 整机分成2段 便于运输 The whole machine is divided into two segments
电压	Voltage	220V 50~60Hz	
气压	Air pressure	0.5~0.6MPa	
功率	Power	3.7KW	
外形尺寸	Dimensions	3170*960*1200mm	
装箱尺寸 (前段)	Packing dimensions of the front section	1470*1020*1280mm	
装箱尺寸 (后段)	Packing dimensions of rear section	1810*1080*1480mm	
净重	Net weight	670kg	
毛重	Gross weight	706kg	
加热元件功率	Heating element power	3.2KW	
加热元件额定温度设定	Temperature setting of heating element	130°C±10°C	

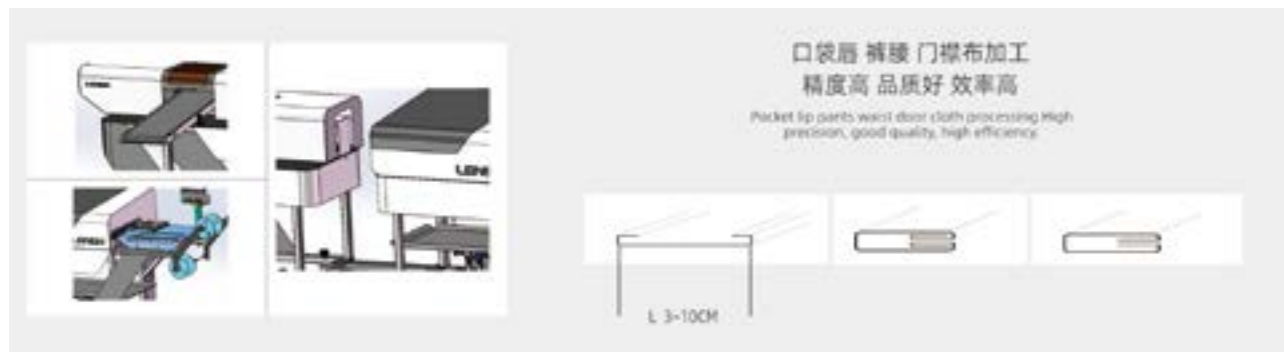


N7031N | 门襟布智能缝制单元
Placket intelligent sewing units

主要应用 POLO 衫门襟智能缝制
The main application of POLO shirt intelligent sewing



规格范围 Specification range



应对工艺需求, 提供智能化设计
Providing intelligent design for process requirements



效率分析 Efficiency analysis



A4 收料部分 A receiving part

型号	Model	A4
电压	Voltage	220V 50-60Hz
气压	Air pressure	0.5-0.6MPa
功率	Power	0.5KW
外形尺寸	Dimensions	1400*1150*1250mm
装箱尺寸	Packing size	1500*1250*1300kg
净重	Net weight	90kg
毛重	Gross weight	108kg

技术参数 Technical parameters

型号	Model	N7031N	备注 Remark 整机分成2段 便于运输 The whole machine is divided into two segments
电压	Voltage	220V 50-60Hz	
气压	Air pressure	0.5-0.6MPa	
功率	Power	3.7KW	
外形尺寸	Dimensions	1950*950*1500mm	
装箱尺寸	Packing size	2050*1050*1550mm	
净重	Net weight	670kg	
毛重	Gross weight	706kg	
加热元件功率	Heating element power	3.2KW	
加热元件额定温度设定	Temperature setting of heating element	130°C ± 10°C	

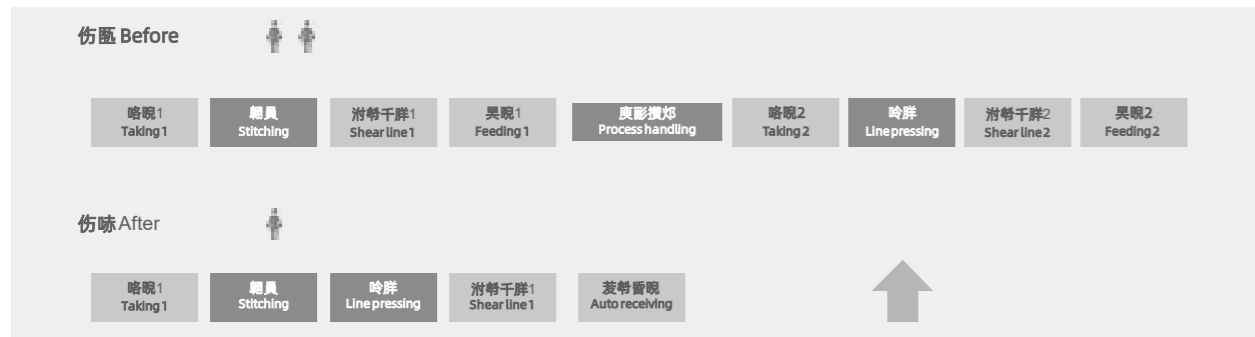


N7041A/B 缝合压线一体机（二合一）
Stitching and pressure line
two in one

主要应用于各类针织梭织面料的缝合和压明线。
Mainly used in all kinds of knitted fabrics seam and press line.



规格范围 Specification range



应对工艺需求，提供智能化设计
Providing intelligent design for process requirements

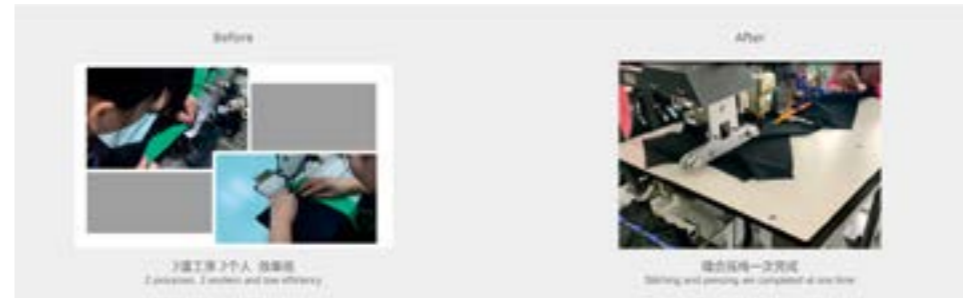
链式 Chain type



锁式 Lock type



效率分析 Efficiency analysis



技术参数 Technical parameters

型号 Model	项目 Project	参数 Parameter
N7041A/B	电压 Voltage	220V 50~60Hz
	气压 Air pressure	0.5~0.6MPa
	功率 Power	3KW
	外形尺寸 Dimensions	1600*1100*1650mm
	装箱尺寸 Packing size	1525*1225*1450mm
	净重 Net weight	330kg
	毛重 Gross weight	394kg
	工作压力 Air pressure	0.45Mpa-0.75Mpa
	效率 Efficiency	15S左右/片
适应范围 To adapt to the scope of	各类需缝合压线的工序 All kinds of stitching and pressing processes 注：弧形过大的工序不适用衣片有拼接骨缝的不适用 Note: the process with too large arc is not Applicable to clothes with patchwork seam.	



N7051A/B 智能罗纹口机
Intelligent Mouth Rib Machine

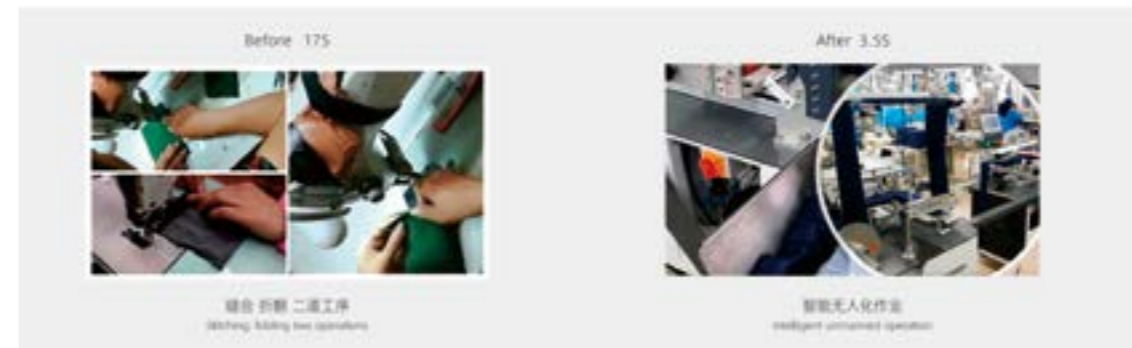
适用各类运动衫裤 ~ 袖口脚口罗纹缝制
Suitable for all types of sweat shirts/sports pants, cuff rib stitching



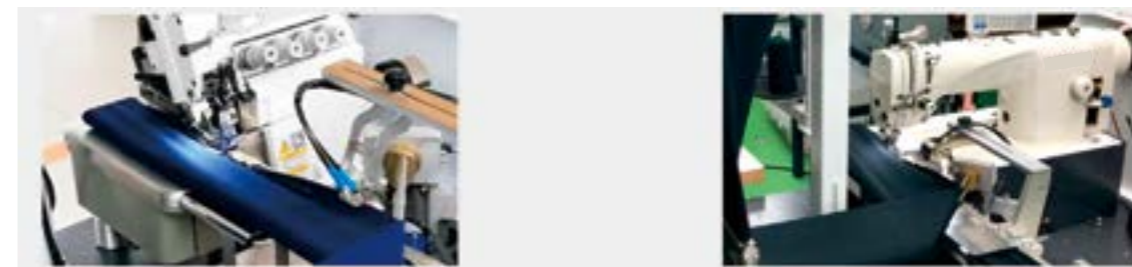
规格范围 Specification range



应对不同工艺, 提供链式和锁式两款机型
Responding to different processes, it offers two models with chain and lock



效率分析 Efficiency analysis



技术参数 Technical parameters

型号	Model	N7051A/B
电压	Voltage	220V 50~60Hz
气压	Air pressure	0.5~0.6MPa
功率	Power	3.5KW
外形尺寸	Dimensions	2850*1000*1600
装箱尺寸	Packing size	前段 forepart 1135*1200*1525 后段 back end 1585*1145*1495
净重	Net weight	536kg
毛重	Gross weight	695kg
工作压力	Air pressure	0.45MPa-0.75MPa
效率	Efficiency	3.5S左右/片
适应范围	Adaptation	各类袖口裤口罗纹制作工序 All kinds of cuff pants ribbed production process

NA3-01C
明筒、暗筒和装饰筒缝
Ming tube, dark tube and decorated tube
NA3-02C
明筒、暗筒和装饰筒缝以及斜角袋、直角袋口袋缝
Ming barrel, dark tube and decorated tube seam
and bevel bags, rectangular bags pocket seam

工作范围 Sewing range
500x280mm

效率 Efficiency
NA3-01C:2000-2800 件 /10 小时
NA3-02C:1800-2500 件 /10 小时

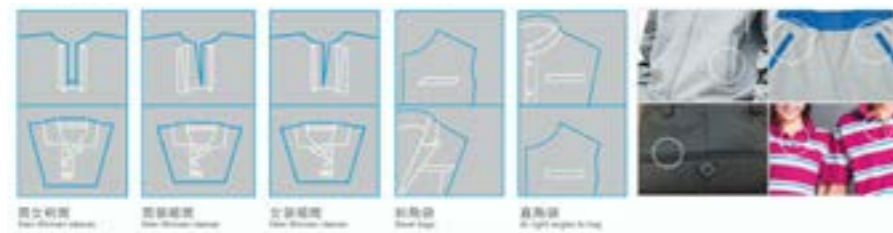


NA3-01C/02C | 自动门襟机 Automatic placket machine

实现门襟缝一系列工序自动化，高生产效率与稳定的品质。具有自动剪线、自动抬压脚、自动倒回缝、自动收叠布料、断线检测、针距调节、产量计算等丰富的功能。

Realize a series of process automation of placket sewing, high production efficiency and stable quality. Have automatic thread trimmer, automatic presser foot lift, automatic inverted backseam, automatic folding cloth break detection, adjustable needle spacing, yield calculation and other rich features

规格范围 Specification range



NA3-678 | 全自动接橡胶筋机 Automatic rubber binding machine

全自动接橡胶筋机一系列工序自动化，高生产效率与稳定的品质。

A series of processes of automatic rubber banding machine are automated, with high production efficiency and stable quality.

全自动接胶机核心优势：

- 一、速度：相比人工接胶机的操作速度 X3 倍：人工接胶每日 3000 条全自动接胶机每日 9000 条；
- 二、对商标：正面、反面都可以对商标，误差在 1 毫米之内；
- 三、人工成本：一个人可以同时照看四到六台机器（按员工工资每月 3000 元来计算）四台全自动接胶机，每月工资只需付 1 人传统接胶方式则需付 4 人工资，可节约 3 份工资；
- 四、可自动计数收料：达到计划数量则自动停止工作，不浪费成本；
- 五、自动定型：通过机器定型后，松紧带不用放预算长度，接胶标准率 100%；

Automatic adhesive machine core advantages:

- 1.Speed: Automatic adhesive machine speed higher 3 times than manual operation, manual work daily produce 3000pcs, but Automatic adhesive machine daily 9000pcs
- 2.On the trademark: positive, negative can be on the trademark, the error is in 1 mm
- 3.Save labor cost: one person can operation four to six machines at the same time
- 4.One worker can operate automatic adhesive machine 4 sets, can save 3 workers salaries.
- 5.Automatic counting and receiving: automatically stop working when the planned quantity is reached, without waste of cost.
- 6.Automatic shaping: after shaping by the machine, the elastic band does not need to put the budget length, the standard rate of bonding reaches 100%;



N9586RM22 | 四工位冲绒机
Four station punching machine

技术参数 Technical parameters

机器型号 Machine model	N9586RM22
充绒口 Filling mouth	4
循环数 Number of cycles	24
可充材料 Rechargeable material	30-90 绒、手撕棉、泡泡棉 /30-90 cashmere, hand torn cotton, bubble cotton
驱动模式 Drive mode	双变频 /Double frequency conversion
搅拌电机 Mixing motor	三相电机 /Three phase motor
最高显示精度 Maximum display accuracy	0.01
设定范围 Setting range	320g
单斗充绒量 Pile filling capacity of single bucket	10
单斗充棉量 Cotton filling capacity of single bucket	15
出斗管口径 Diameter of bucket outlet pipe	32mm
填充速度 Filling speed	5-16
语音模块 Voice module	可选 /Optional
物联网模块 IOT module	可选 /Optional
扫码充绒 Code scanning and pile filling	可选 /Optional
数据流 Data stream	可选 /Optional
电源电压 Supply voltage	单相 220VAC / Single phase 220VAC
额定功率 Rated power	3.5KW
气压要求 Air pressure requirements	0.6-0.8MPa
主机尺寸 Host size	2450*900*2000mm
称重箱尺寸 Weighing box size	2200*600*800mm
除尘台尺寸 Size of dedusting table	1000*600*1150mm
最小占地尺寸 Minimum footprint	6*3m
推荐场地尺寸 Recommended site size	8*4m



N9586RM10/9587RM10/9588RM10/9583RM20/9583RM+/9584RM20 | 单边小批量机型
Single side small batch model

技术参数 Technical parameters

机器型号 Machine model	N9586RM10	N9587RM10	N9588RM10	N9583RM20	N9583RM20+	N9584RM20
充绒口 Filling mouth	1	1	1	2	2	2
循环数 Number of cycles	6	7	8	6	7	8
可充材料 Rechargeable material	30-90 绒、手撕棉、泡泡棉 /30-90 cashmere, hand torn cotton, bubble cotton					
驱动模式 Drive mode	双变频 /Double frequency conversion					
搅拌电机 Mixing motor	三相电机 /Three phase motor					
最高显示精度 Maximum display accuracy	0.01					
设定范围 Setting range	320g					
单斗充绒量 Pile filling capacity of single bucket	20					
单斗充棉量 Cotton filling capacity of single bucket	30					
出斗管口径 Diameter of bucket outlet pipe	32mm					
填充速度 Filling speed	5-16					
语音模块 Voice module	可选 /Optional					
物联网模块 IOT module	可选 /Optional					
扫码充绒 Code scanning and pile filling	可选 /Optional					
数据流 Data stream	可选 /Optional					
电源电压 Supply voltage	单相 220VAC / Single phase 220VAC					
额定功率 Rated power	2KW					
气压要求 Air pressure requirements	0.6-0.8MPa					
主机尺寸 Host size	2140*600*2000mm					
称重箱尺寸 Weighing box size	1900*600*900mm					
除尘台尺寸 Size of dedusting table	1000*600*1150mm					
最小占地尺寸 Minimum footprint	6*2.5m					
推荐场地尺寸 Recommended site size	4*3.5m					



N9586RM11/9587RM11/9588RM11/9584RM22/9586RM11B | 双边高速机型
Bilateral high-speed model

技术参数 Technical parameters

机器型号 Machine model	N9586RM11	N9587RM11	N9588RM11	N9584RM22	N9586RM11B
充绒口 Filling mouth	2	2	2	4	2
循环数 Number of cycles	12	14	16	16	12
可充材料 Rechargeable material	30-90 绒、手撕棉、泡泡棉 /30-90 cashmere, hand torn cotton, bubble cotton				
驱动模式 Drive mode	双变频 /Double frequency conversion				
搅拌电机 Mixing motor	三相电机 /Three phase motor				
最高显示精度 Maximum display accuracy	0.01				
设定范围 Setting range	320g				
单斗充绒量 Pile filling capacity of single bucket	20			35	
单斗充棉量 Cotton filling capacity of single bucket	30			70	
出斗管口径 Diameter of bucket outlet pipe	32mm			38mm	
填充速度 Filling speed	5-16			15-30	
语音模块 Voice module	可选 /Optional				
物联网模块 IOT module	可选 /Optional				
扫码充绒 Code scanning and pile filling	可选 /Optional				
数据流 Data stream	可选 /Optional				
电源电压 Supply voltage	单相 220VAC / Single phase 220VAC				
额定功率 Rated power	3KW				
气压要求 Air pressure requirements	0.6-0.8MPa				
主机尺寸 Host size	2140*900*2000mm				
称重箱尺寸 Weighing box size	1900*600*800mm				
除尘台尺寸 Size of dedusting table	1000*600*1150mm				
最小占地尺寸 Minimum footprint	6*2.5m				
推荐场地尺寸 Recommended site size	8*3.5m				



N9162M10T/9162M20T | 大克重一体机
Heavy duty machine

技术参数 Technical parameters

机器型号 Machine model	N9162M10T	N9162M20T
充绒口 Filling mouth	1	2
循环数 Number of cycles	2	4
可充材料 Rechargeable material	30-90 绒、手撕棉、泡泡棉 /30-90 cashmere, hand torn cotton, bubble cotton	
驱动模式 Drive mode	双变频 /Double frequency conversion	
搅拌电机 Mixing motor	三相电机 /Three phase motor	
最高显示精度 Maximum display accuracy	0.01	
设定范围 Setting range	320g	
单斗充绒量 Pile filling capacity of single bucket	100	
单斗充棉量 Cotton filling capacity of single bucket	150	
出斗管口径 Diameter of bucket outlet pipe	50mm	
填充速度 Filling speed	5-30	
语音模块 Voice module	可选 /Optional	
物联网模块 IOT module	可选 /Optional	
扫码充绒 Code scanning and pile filling	可选 /Optional	
数据流 Data stream	可选 /Optional	
电源电压 Supply voltage	单相 220VAC / Single phase 220VAC	
额定功率 Rated power	2KW	
气压要求 Air pressure requirements	0.6-0.8MPa	
主机尺寸 Host size	2000*1000*1900mm	
风机尺寸 Weighing box size	600*600*600mm	
最小占地尺寸 Minimum footprint	2*2.5m	
推荐场地尺寸 Recommended site size	3*3.5m	



N9584RM10 | 单边打样小机型
Single side proofing
small model

技术参数 Technical parameters

充绒口 Filling mouth	1
循环数 Number of cycles	4
可充材料 Rechargeable material	30-90 绒、手撕棉、泡泡棉 /30-90 cashmere, hand torn cotton, bubble cotton
驱动模式 Drive mode	双变频 /Double frequency conversion
搅拌电机 Mixing motor	三相电机 /Three phase motor
最高显示精度 Maximum display accuracy	0.01
设定范围 Setting range	320g
单斗充绒量 Pile filling capacity of single bucket	20
单斗充棉量 Cotton filling capacity of single bucket	30
出斗管口径 Diameter of bucket outlet pipe	32mm
填充速度 Filling speed	5-16
语音模块 Voice module	可选 /Optional
物联网模块 IOT module	可选 /Optional
扫码充绒 Code scanning and pile filling	可选 /Optional
数据流 Data stream	可选 /Optional
电源电压 Supply voltage	单相 220VAC / Single phase 220VAC
额定功率 Rated power	2KW
气压要求 Air pressure requirements	0.6-0.8MPa
主机尺寸 Host size	1400*600*2000mm
称重箱尺寸 Weighing box size	1100*600*900mm
除尘台尺寸 Size of dedusting table	1000*600*1150mm
最小占地尺寸 Minimum footprint	3*1.5m
推荐场地尺寸 Recommended site size	4*3m



N260 | 环保上料机
Environmental protection
feeding machine

技术参数 Technical parameters

机器型号 Machine model	N260
接口管径 Interface pipe diameter	Φ150 (可以定制尺寸) Can be customized
驱动模式 Drive mode	单变频 /Single frequency conversion
搅拌电机 Mixing motor	三相电机 /Three phase motor
电源 Power Supply	AC220V50Hz
额定功率 Rated power	0.6KW
机器尺寸 L*W*H Machine size	900*1200*2400
装箱尺寸 Packing size	1*1.5*2.6
净重 / 毛重 Net weight /gross weight	350KG

梭织面料的铺布解决之道，让您的铺布效率再次获得提升。
(可选择反手机型)

The solution to the spread of woven fabrics, so that your spread efficiency has been improved again.
(Backhand model is optional)



G-Y3S 自动铺布机 Automatic spreading machine

常规功能 NORMAL FUNCTION



光电智能防撞 (选配)
Photoelectric intelligent collision avoidance (optional)

可设定距离的光电感应式防撞系统，通过光电自动捕捉、识别进行过程中的障碍物提前自动停歇
Photoelectric induction anti-collision system can be set distance, through photoelectric automatic capture, identify the obstacles in the process
Obstacles stop automatically in advance



面料专用性
Fabric specificity

适用于常见的梭织，涂层里布、西裤夹克、牛仔面料。
Suitable for common woven, coated lining, Pants jacket, denim fabric.



自动伺服送布
Automatic servo cloth feeding

可实现无张力铺布效果且对边精准控制在 5mm 以内。
Suitable for common woven, coated lining, Pants jacket, denim fabric.



触控科技
A touch of science and technology

全新操作界面，电容屏触控技术与智能手机一样触感
New operation interface, capacitive touch control technology it feels like a smartphone.



单位压布装置
Unit cloth pressing device

针对较轻薄的面料，实现自动压布，减少劳动强度，提升铺布效果
Automatic pressing is realized for lighter and thinner woven fabrics
Cloth, reduce labor intensity, improve the effect of cloth laying



智能调节松紧装置
Intelligent adjustment of the elastic device

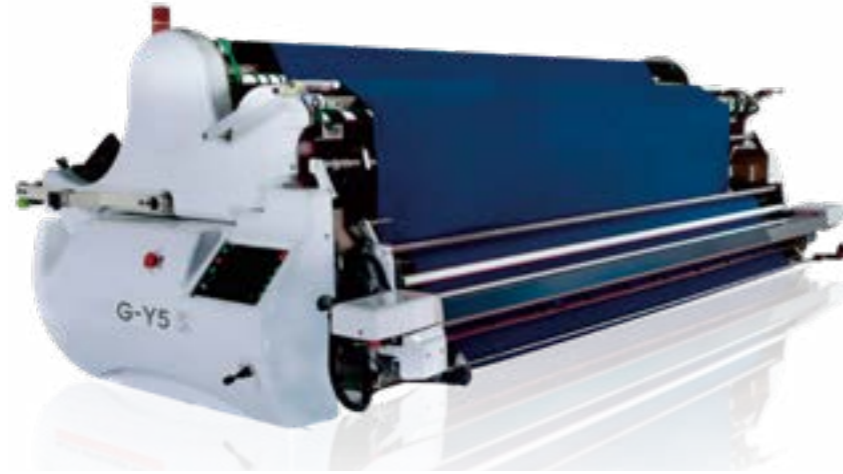
当布架无布时，自动完成原点归零、复位，无需人工干预。
When there is no cloth on the cloth frame, it will automatically return to zero at the origin, Reset without manual intervention.

技术参数 TECHNICAL SPECIFICATION

设备型号	Device model	G-Y3S-160	G-Y3S-190
铺布宽度	Spread width	1600mm	1900mm
最大布卷直径	Maximum cloth roll diameter		450mm
最大布卷重量	Maximum cloth roll weight		80kg
最大驱动速度	Maximum driving speed		160m/min
最大铺布高度	Maximum spreading height		单拉230mm/双拉160mm
电源功率	Power		1P 220V / 50Hz 1kw
裁板宽度	Panel width	1830mm	2130mm
机器尺寸(长x宽x高)	Machines size (length x width x height)	1900x2300x1250mm	1900x2600x1250mm

一直被模仿，从未被超越，开创
针\梭织两用铺布时代。
(可选择反手机型)

It has been imitated and never
surpassed, creating the era of
needle/woven fabrics.
(Can choose anti-phone type)

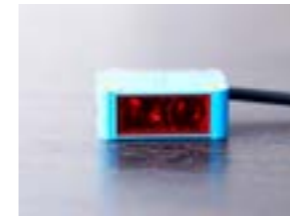


G-Y5S | 自动铺布机 Automatic spreading machine

常规功能 NORMAL FUNCTION

自动拨边装置
Automatic side setting device

完美解决针织布料卷边问题；实现卷边拨平，张力释放。
Perfectly solve the problem of knitted fabric curling; realize curling leveling and tension release



自动伺服送布
Automatic servo cloth feeding

可实现无张力铺布效果且对边精准控制在 5mm 以内。
Suitable for common woven, coated lining, Pants jacket, denim fabric.



触控科技
A touch of science and technology

全新操作界面，电容屏触控技术与智能手机一样触感
New operation interface, capacitive touch control technology it feels like a smartphone.



单位压布装置
Unit cloth pressing device

针对较轻薄的梭织面料，实现自动压布，减少劳动强度，提升铺布效果
Automatic pressing is realized for lighter and thinner woven fabrics. Cloth, reduce labor intensity, improve the effect of cloth laying



智能调节松紧装置
Intelligent adjustment of the elastic device

当布架无布时，自动完成原点归零、复位，无需人工干预。
When there is no cloth on the cloth frame, it will automatically return to zero at the origin, Reset without manual intervention.



圆筒布装置
Cylindrical cloth device

销布机标准配置装置 铺陈圆筒布专用布斗
可自动调节、松紧布匹张力
Standard configuration device of cloth pinning machine Special cloth bucket for laying out cylindrical cloth Can automatically adjust, elastic cloth tension

技术参数 TECHNICAL SPECIFICATION

设备型号	Device model	G-Y5S-160	G-Y5S-190	G-Y5S-210	G-Y5S-260	家纺 Home textiles
铺布宽度	Spread width	1600mm	1900mm	2100mm	2600mm	可定制 Customizable
最大布卷直径	Maximum cloth roll diameter	500mm				
最大布卷重量	Maximum cloth roll weight	80kg				
最大驱动速度	Maximum driving speed	106m/min				
最大铺布高度	Maximum spreading height	单拉230mm/双拉160mm				
电源功率	Power	1P 220V / 50Hz 1kw				
裁板宽度	Panel width	1830mm	2130mm	2330mm	2830mm	可定制 Customizable
机器尺寸(长x宽x高)	Machine size (length x width x height)	1900x2300x1250mm	1900x2600x1250mm	1900x2800x1250mm	1900x3300x1250mm	可定制 Customizable



H98N/K | 智能电脑裁床
INTELLIGENT COMPUTER CUTTING BED

常规功能 NORMAL FUNCTION

运用优质钢材的一体式框架结构设计，采用欧洲进口的大型加工中心，所有安装基准面一次装夹加工，保证所有安装点精确稳定。高精度的智能裁床，拥有“刀智能”的裁刀智能补偿技术让剪裁更得心应手

Integral frame structure design using high quality steel, Large processing centers imported from Europe are used. All installation datum surfaces are clamped at one time. Ensure the accuracy and stability of all installation points. High precision intelligent cutting machine, Has "knife intelligence" cutting tool intelligent compensation technology. Let tailoring more handy



刀智能
Knife smart

媲美国际顶级裁床的“黑科技配备微米级智能感应装置与智能处理系统，对裁剪作业中的刀片变形进行动态补偿和纠正，极大地改善了多层裁片上下层的误差，真正实现了高精度智能裁剪！

Compared with the international top cutting bed, "black technology is equipped with micron intelligent induction device and intelligent processing system, which dynamically compensates and corrects the blade deformation in cutting operation, greatly improves the errors of the upper and lower layers of multi-layer cutting pieces, and truly realizes high-precision intelligent cutting!



智能磨刀系统

Intelligent knife sharpening system

不会对裁刀造成锯齿形损伤，延长刀片使用时间，降低成本，拆装更换方便，易学易懂，可根据不同面料选择不同规格砂带，适用面更广，磨刀效率同比非砂带磨刀结构显著提升，可设置仅在拐角处提刀并磨刀，保证裁剪品质。

No sawtooth damage to the cutter, Prolong blade service time, reduce cost, Easy to disassemble and replace, easy to learn and easy to understand, Different specifications of sand belt can be selected according to different fabrics, wider application. The sharpening efficiency is significantly improved compared with that of the non-abrasive belt. It can be set only at the corner to lift and sharpen the knife to ensure cutting quality.



高效裁头

Efficient cutting head

最高可达6000转，最高可裁90mm(真空压缩后)，大幅度提升裁剪效率，采用微油式设计，减少油污污染，紧凑的裁头设计，更加美观，易于维护。

Up to 6000 RPM. The maximum cutting efficiency can be 90mm (after vacuum compression), greatly improve the cutting efficiency. The micro oil design, reduce oil pollution, compact cutting head design, more beautiful, easy to maintain.



智能裁剪软件

Intelligent clipping software



打孔装置

Punching device



智能触控屏

Smart touch screen



一体式床体

Integrated bed body

技术参数 TECHNICAL SPECIFICATION

工作宽度	Working width	2.0米	2.0 meters
裁剪窗口长度	Clipping window length	2.0米/2.5米	2.0 m / 2.5 m
拣料传送长度	Transfer length of picking material	2.0米/2.5米	2.0 m / 2.5 m
最大切割高度	Maximum cutting height	90毫米(真空压缩后)	90 mm (after vacuum compression)
最大速度	Maximum speed	100米/分钟	100 meters per minute
最大加速度	Maximum acceleration	1.5g	1.5 g
最大转速	Maximum speed	6000转	6000 r
平均产量(视情况而定)	Average production (subject to availability)	12米/分钟	12 meters per minute
最大刀头加速度	Maximum tool head acceleration	2.5米/秒	2.5 m/s
裁台重量	Cutting machine weight	3300公斤	3300 kg
裁床高度	Cutting bed height	2169毫米	2169 mm
刀智能	Knife smart	标配	The standard
主电源	Power supply	5P 380V/50Hz/25KW/100A(含22KW真空装置) (Include 22KW vacuum device)	



H-88N/89N 智能电脑裁床
INTELLIGENT COMPUTER CUTTING BED

常规功能 NORMAL FUNCTION

广泛应用于针织面料的智能裁剪
智能磨刀系统高效裁头
刀智能
阶梯式裁剪
一体式床体腔体

It is widely used in intelligent cutting of knitted fabrics
Intelligent tool grinding system efficient cutting head
Knife Intelligence [Patent]
Stepped cutting
ntegrated bed body cavity



智能磨刀系统
Intelligent knife sharpening system

拆装更换方便，易学易懂；可根据不同面料选择不同规格砂带；不会对裁刀造成锯齿形损伤，降低使用成本；磨刀效率同比非砂带磨刀结构显著提升；可设置仅在拐角处提刀并磨刀，保证裁剪品质。

Convenient disassembly and replacement, easy to learn and understand; Can choose different specifications of sand belt according to different fabrics; It will not cause sawtooth damage to the cutting knife and reduce the use cost. The tool grinding efficiency is significantly improved compared with the non-abrasive belt grinding structure. It can be set only at the corner to lift and sharpen the knife to ensure cutting quality.



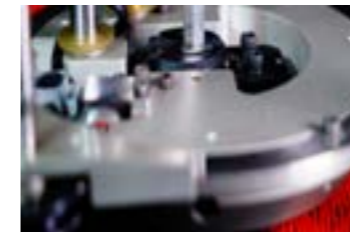
高效裁头

High-efficiency cutting system

转速最高可达 6000 转，大幅提升裁剪效率；

动态磨刀技术，可在裁头移动时进行磨刀工作，提升效率；采用微油式设计，减少油污。

Speed up to 6000 RPM, greatly improving cutting efficiency; Dynamic sharpening technology, can be sharpened when the cutting head moving, improve efficiency; Adopt micro oil type design to reduce oil pollution.



刀智能

Knife smart

在微米级智能感应部件与智能控制系统的结合下，对裁剪作业中的刀片变形进行动态补偿和纠正，极大地改善裁剪过程中上层面料与下层面料的误差，真正实现高精度智能裁剪！

With the combination of micron-scale intelligent sensing components and intelligent control system, Dynamic compensation and correction of blade deformation in cutting operation, Greatly improve the error between upper fabric and lower fabric in the cutting process, Really achieve high precision intelligent cutting!



智能裁剪软件

Intelligent clipping software



打孔装置

Punching device



智能触控屏

Smart touch screen



一体式床体

Integrated bed body

技术参数 TECHNICAL SPECIFICATION

工作宽度	Working width	1.6/2.0/2.2/2.6 m
裁剪窗口长度	Clipping window length	2.0/2.5/3.3m
拣料传送带长度	Length of conveyor belt for picking material	2.0/2.5/3.3m
最大切割高度	Maximum cutting height	90mm (真空压缩后 after vacuum compression)
最大速度	Maximum speed	100m/min
最大加速度	Maximum acceleration	1.5g
最大转速	Maximum speed	6000r
最大刀头加速度	Maximum tool head acceleration	2.5m/s ²
裁台重量	Cutting machine weight	4.2t
裁床高度	Cutting bed height	2169mm
主电源	The main power supply	5P 380V / 50Hz / 25Kw / 120A (含20Kw真空装置 including 20KW vacuum device)
控制电源	Control the power	3P 200V-240V / 单相 single-phase / 50Hz / 20A
裁台真空	The cutting vacuum	380/440V, 3相 phase, 50/60HZ, 20A
平均耗电	The average power consumption	3相5线系统17-20Kw(变频技术) 3-phase 5-wire system 17-20KW (frequency conversion technology)

Scan Me



ANHUI GLEADER INTELLIGENT TECHNOLOGY CO. LTD.,
安徽格莱德智能科技有限公司

