

FINISHING MACHINERY

2024/2025

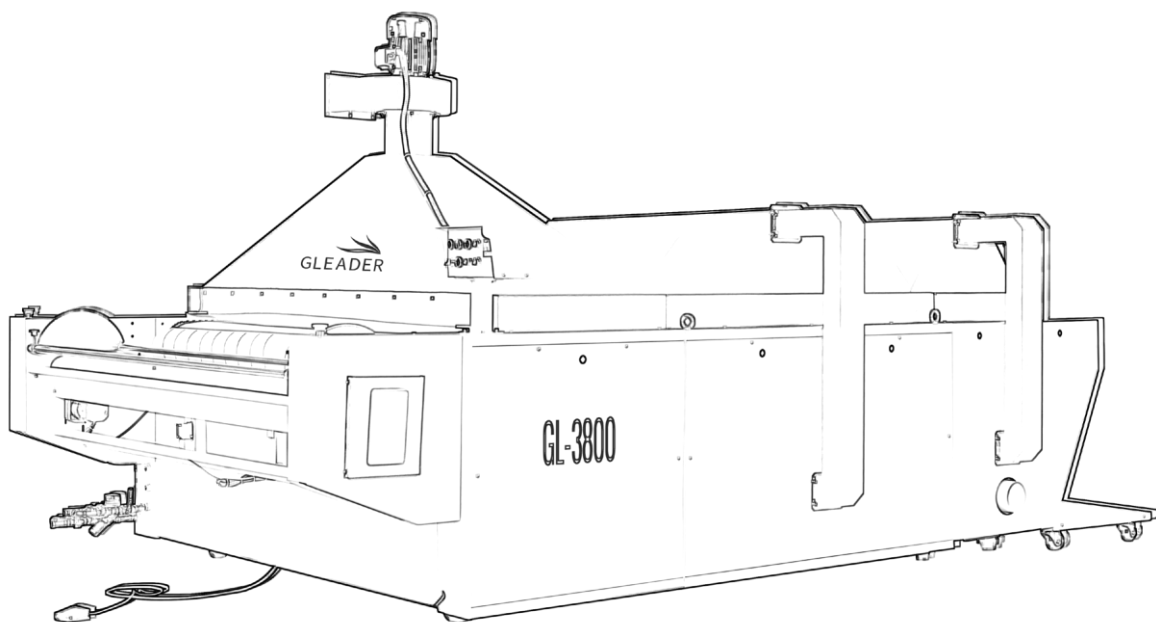
Rich Product Portfolio

- Spreading And Cutting Equipment
- Shrinking forming And Fusing press Equipment
- Ironing finishing Equipment



45-78

Shrinking forming And Fusing press Equipment



Catalogue

GL-1800 SHRINKING AND FORMING MACHINE	47
GL-1800L SHRINKING AND FORMING MACHINE	49
GL-1800LA SHRINK GLUE SHAPING ONE-PIECE MACHINE	51
GL-2800 SHRINKING AND FORMING MACHINE	53
GL-3800/H/W SHRINKING AND FORMING MACHINE	55
GL-3800L/LH/LW SHRINKING AND FORMING MACHINE	57
GL-5800 SHRINKING AND FORMING MACHINE	59
GL-900LL DOUBLE STATION AUTOMATIC RECEIVING MACHINE	61
GL-450 FUSING PRESS MACHINE	63
GL-450G FUSING PRESS MACHINE	65
GL-600F/FA FUSING PRESS MACHINE	67
GL-600A/900A CONTINUOUS FUSING PRESS MACHINE	69
GL-900RS CONTINUOUS FUSING PRESS MACHINE	71
GL-1000B LOW-TEMPERATURE CONTINUOUS FUSING PRESS MACHINE	73
GL-900-1800LL FUSING MACHINE	75
GL-360series PACKAGING MACHINE	77



GL-1800 SHRINKING AND FORMING MACHINE

FEATURES

- Each section of the conveyor system has independent control, ensuring that
- fabrics are fed with tension-free movement.
- The combination of wet steam and vibrator system ensures that fabrics are completely softened.
- The wet fabrics from the vibrating area are quickly dried in the drying area with the appropriate temperature.
- The powerful cooling system efficiently reduces the temperature of the fabrics, resulting in well-formed fabric due to the temperature difference.
- The swing structure allows the fabrics to be folded back and forth, reducing tension during rewinding.
- A special auxiliary heating device is available to compensate for any lack of steam heating. The temperature in the drying area can be fully adjusted.
- The standard Meter Counter accurately measures the length of the fabric after it has been formed.

APPLICATIONS

- Minimize fabric shrinkage.
- Ensure fabric retains its size and shape during production.
- Facilitate smooth fabric cutting.
- Enhance the close contact between lining and shell fabric.
- Eliminate the need to account for shrinkage after cutting, sewing, and pressing.
- Significantly improve product quality.
- Increase the value added to the product.
- Optimal machine for use with CAD and CAM systems.
- Ideal choice for reducing fabric shrinkage and achieving desired fabric form.
- Enhance efficiency and precision in fabric production.



The main operating system

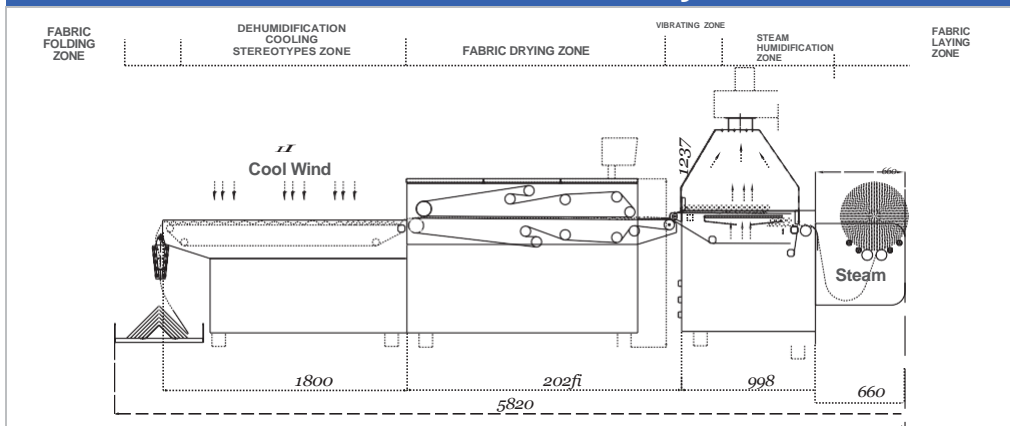


Front-Step control system



Machine's Main Rollers

Functional Structure Layout



SPECIFICATION

Model	GL-1800
Power Supply	3P380V/220V
Cooling Motor	0.75kw×5
Main Motor	0.4kw
Heating Power	20.4kw
Belt Speed	0-10m/min
Air Pressure	0.5-0.7mpa
Steam Consumption	150kg/hr
Conveyor Motor	0.2kw×2
Fabric Stand Motor	90w
Machine Size(LxWxH)	5820×2500×2000mm
N. W / G. W	3000/3500kgs
Shrink Width	1800mm
Total Power	25kw
Vibrating Motor	90w
Revising Motor	6w×2

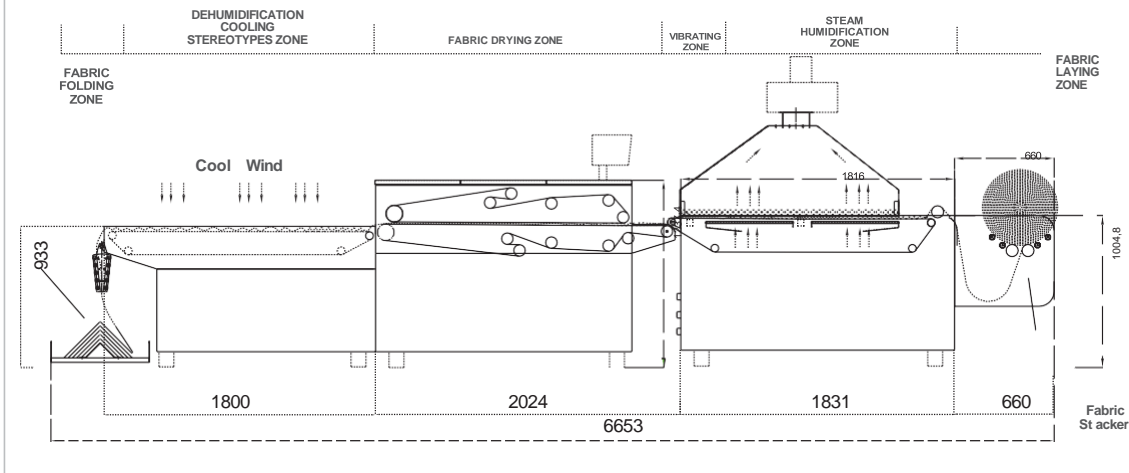


GL-1800L SHRINKING AND FORMING MACHINE

FEATURES

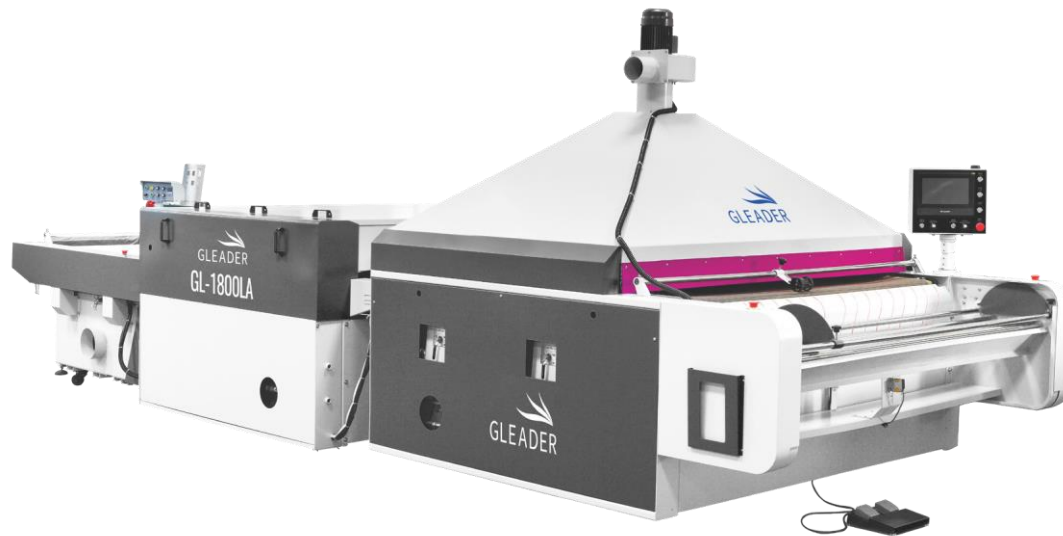
- Each section of the conveyor system has independent control for feeding fabrics with tension-free.
- The fabrics are completely softened using steam and a vibrator.
- The fabrics go through 2 sections of steam area and 2 sections of vibration area before being dried quickly in the drying area at the appropriate temperature.
- A powerful cooling system is used to promptly cool down the temperature of the fabrics, resulting in well-formed fabrics due to the temperature difference.
- The fabrics are folded back and forth using a swing structure, which helps reduce tension during rewinding.
- A special auxiliary heating device is available to compensate for any lack of steam heating. The temperature of the drying area can be fully adjusted.
- The machine is equipped with a Meter Counter as a standard feature, which accurately measures the length of the fabric after forming.

Functional Structure Layout



SPECIFICATION

Model	GL-1800L
Power Supply	3P380V/220V
Cooling Motor	0.75kw×5
Main Motor	0.4kw
Heating Power	20.4kw
Belt Speed	0-10m/min
Air Pressure	0.5-0.7mpa
Steam Consumption	200kg/hr
Conveyor Motor	0.2kw×2
Fabric Stand Motor	90w
Machine Size (Lxwxh)	6653×2500×2100mm
N. W / G. W	3150/3700kgs
Shrink Width	1800mm
Total Power	25.5kw
Vibrating Motor	90w
Revising Motor	6w×2

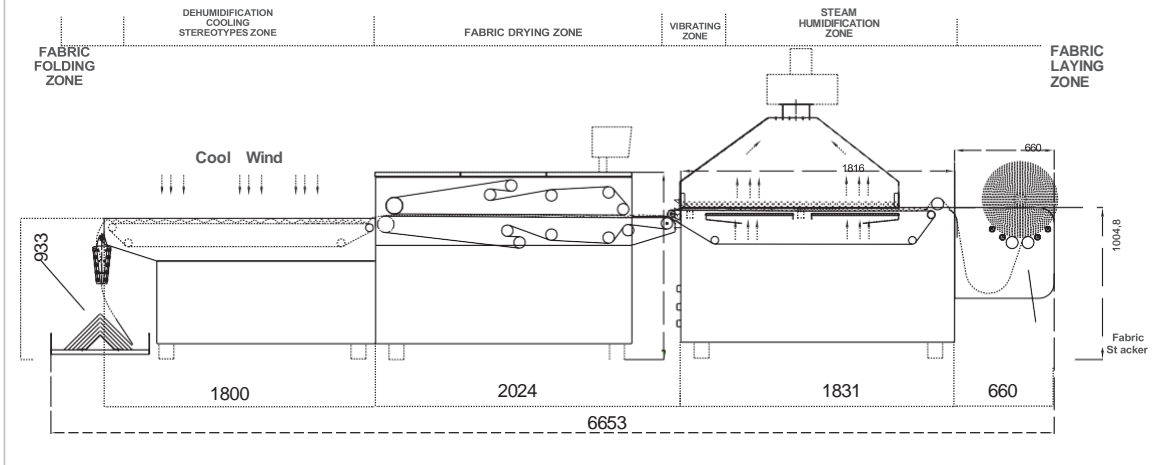


GL-1800LA SHRINK GLUE SHAPING ONE - PIECE MACHINE

FEATURES

- Each section of the conveyor system has independent control for feeding fabrics with tension-free.
- The fabrics are completely softened using steam and a vibrator.
- The fabrics go through 2 sections of steam area and 2 sections of vibration area before being dried quickly in the drying area at the appropriate temperature.
- A powerful cooling system is used to promptly cool down the temperature of the fabrics, resulting in well-formed fabrics due to the temperature difference.
- The fabrics are folded back and forth using a swing structure, which helps reduce tension during rewinding.
- A special auxiliary heating device is available to compensate for any lack of steam heating. The temperature of the drying area can be fully adjusted.
- The machine is equipped with a Meter Counter as a standard feature, which accurately measures the length of the fabric after forming.

Functional Structure Layout



SPECIFICATION

Model	GL-1800LA
Power Supply	3P380V/220V
Cooling Motor	0.75kw × 5
Main Motor	0.4kw
Heating Power	20.4kw
Belt Speed	0-10m/min
Air Pressure	0.5-0.7mpa
Steam Consumption	200kg/hr
Conveyor Motor	0.2kw × 2
Fabric Stand Motor	90w
Machine Size (LxWxH)	6653 × 2500 × 2100mm
N. W / G. W	3150/3700kgs
Shrink Width	1800mm
Total Power	25.5kw
Vibrating Motor	90w
Revising Motor	6w × 2

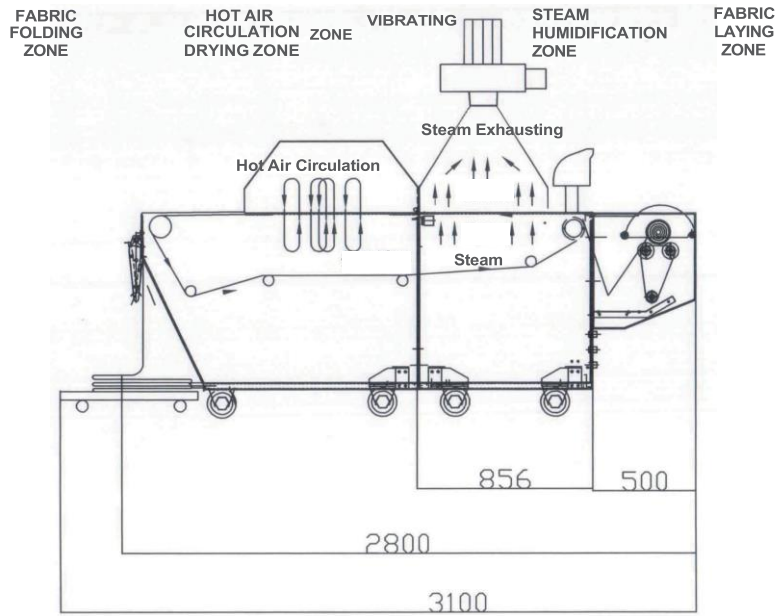


GL-2800 SHRINKING AND FORMING MACHINE

FEATURES

- The Shrinking technique aims to soften and shape fabric by manipulating the orientation of the silk and yarn.
- The fabric becomes free from stretching and shrinking, making it easy to sew without worrying about changes in size.
- Once the shrinking process is complete, the fabric's size is set and it has a comfortable texture that remains unchanged even after ironing.
- This shrinking and forming machine is essential for working with CAD and CAM processes in garment production.
- By adjusting the direction of the silk and yarn, the Shrinking technique ensures that the fabric is soft and well-formed, eliminating the need for customers to account for stretch or shrinkage when creating garments.

Functional Structure Layout



SPECIFICATION

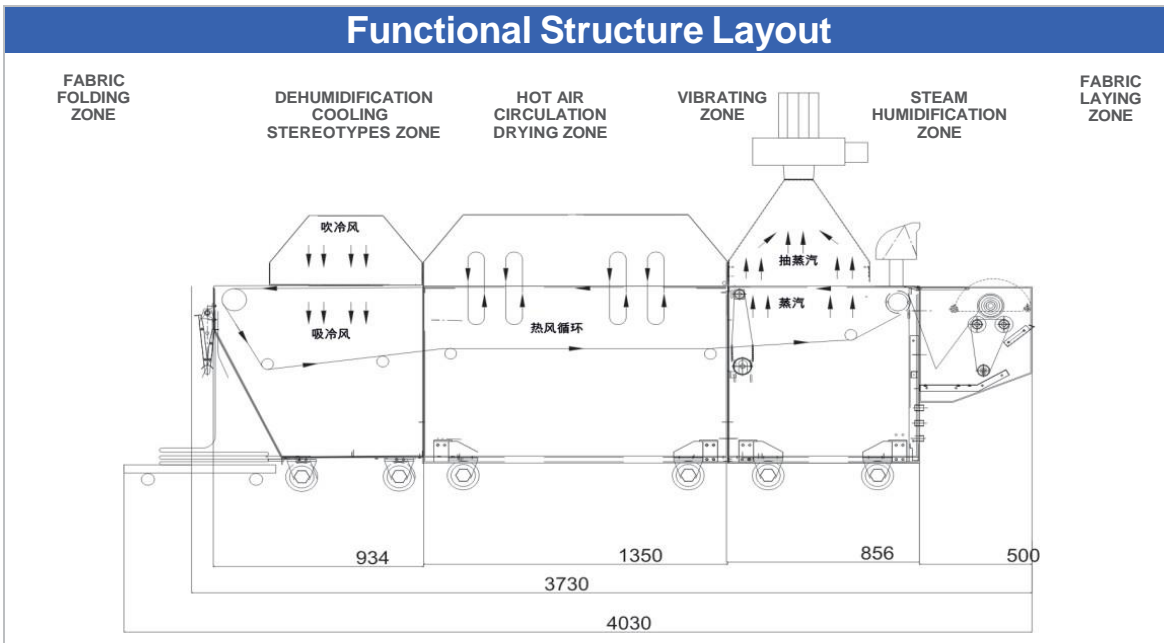
Model	GL-2800
Power Supply	3P380V/220V
Cooling Motor	0.75kw×2
Main Motor	0.4kw
Air Pressure	0.5-0.7mpa
Steam Consumption	120kg/hr
Belt Speed	0-10m/min
Fabric Stand Motor	90w
Machine Size (LxWxH)	2800×2600×1950mm
N. W / G. W	1200/1500kgs
Shrink Width	1850mm
Total Power	1.9kw



GL-3800/H/W SHRINKING AND FORMING MACHINE

FEATURES

- The Shrinking technique is utilized to soften and shape raw fabrics by adjusting the direction of the silk yarn.
- Shrunk cloth remains unwrinkled during sewing, making it easier to work with and eliminating the need to account for stretch or shrinkage in garments.
- Following the shrinking process, the size of raw fabrics is fixed, resulting in a high-quality feel and preventing further shrinkage during ironing.
- This shrinking and forming machine is the ideal choice for integration with CAD and CAM systems.
- Customized production options are available, including features such as a drying zone with a heater, a pre-wet zone, drying zone, and cooling zone that have been widened.



SPECIFICATION

Model	GL-3800	GL-3800H	GL-3800W
Power Supply	3P380V/220V		
Air Pressure	0.5-0.7mpa		
Steam Consumption	150kg/hr	100kg/hr	150kg/hr
Shrink Width	1850mm		2100mm
Total Power	3.59kw	24kw	3.59kw
Cooling Motor	0.75KW×4	0.75KW×4	0.75KW×4
Main Motor	0.4KW		
Fabric Stand Motor	90W		
Belt Speed	0-10m/min		
Machine Size (LxWxH)	3730×2600×1950mm	3730×2600×1950mm	3730×2600×1950mm
N. W / G. W	1500/2000kgs	1500/2000kgs	1800/2300kgs
Remarks	Production under customized demand is available. H: Drying zone with heater; W: Pre-wet zone, drying zone, cooling zone Widened.		

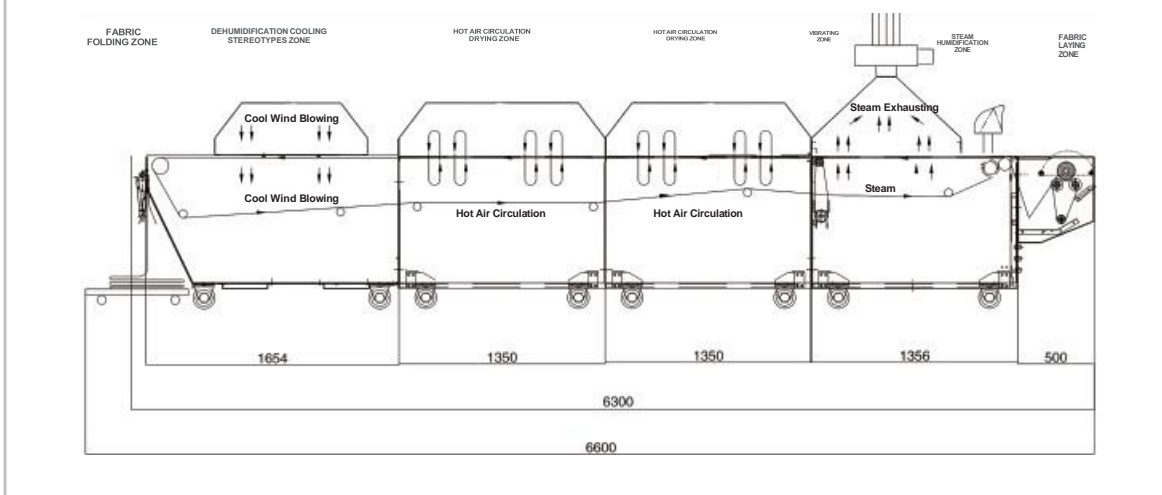


GL-3800L/LH/LW SHRINKING AND FORMING MACHINE

FEATURES

- In response to the needs of large and medium-sized enterprises, we have developed an advanced shrinking and forming machine. This latest model features extended lengths in the pre-heating, steaming, drying and forming, and cooling and collecting areas, resulting in a significantly improved preshrinking effect.
- The machine is constructed with high-efficiency materials that provide over 30% energy savings compared to standard options. Additionally, the integrated recycled internal heat system further reduces power consumption. The adjustable feeding speed allows customers to tailor the preshrinking process according to various fabric types. It is suitable for a wide range of materials, including knitted, woven, and denim fabrics.
- Operation is simplified through a robust cooling system and a swinging folding device. Users can set and modify the pre-humidity, steam volume, and temperature. After the fabrics undergo steaming and relaxation, the steam is evenly distributed across different areas, effectively softening and shaping the fabrics within a stable environment.
- The fabrics are transported into the drying area via a vibration zone, ensuring rapid drying at optimal temperatures. The powerful cooling system promptly reduces the fabric temperature, allowing for effective shaping due to the temperature differential.
- An integrated meter counter accurately measures the length of the fabric post-forming. This model is designed with a focus on energy efficiency and environmental protection, maintaining a sealed production environment to ensure consistent temperature and humidity levels.
- Steam circulation and discharge occur in a conventional current mode, enhancing the pre-heating effect and ensuring even steam distribution. Custom production options are available, with extended lengths for the pre-wet, drying, and cooling zones, as well as widened zones for enhanced performance.

Functional Structure Layout



SPECIFICATION

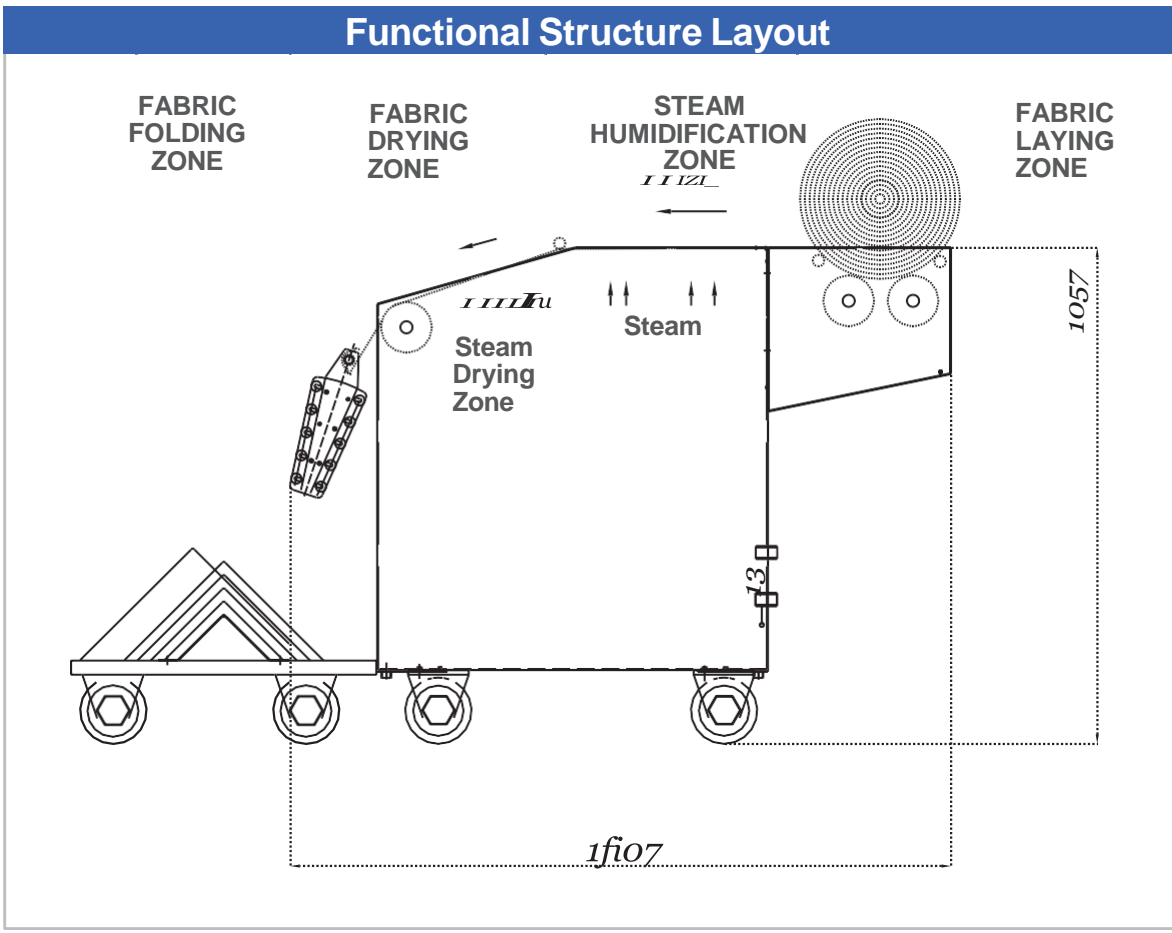
Model	GL-3800L	GL-3800LH	GL-3800LW
Power Supply	3P380V/220V		
Air Pressure	0.5-0.7mpa		
Steam Consumption	200kg/hr	100kg/hr	200kg/hr
Shrink Width	1850mm		2100mm
Total Power	4.33kw	24kw	4.33kw
Cooling Motor	0.75KW×4	0.75KW×4	0.75KW×4
Main Motor	0.4KW		
Fabric Stand Motor	90W		
Belt Speed	0-10m/min		
Machine Size (LxWxH)	6300×2600×1950mm	6300×2600×1950mm	6300×2900×1950mm
N. W / G. W	2350/2850kgs	2350/2850kgs	2650/3150kgs
Remarks	Production under customized demand is available .H: Drying zone with heater; W: Pre-wet zone, drying zone, cooling zone Widened.		



GL-5800 SHRINKING AND FORMING MACHINE

FEATURES

- Newly developed machine suitable for middle and small-scale factories, featuring easy mobility.
- Fabrics are thoroughly softened and shaped to their original size by the steam humidifier drying process.
- The beam swing capability allows for folding fabrics back and forth, minimizing tension from rewinding.
- This machine is equipped with functions for preshrinking, shaping, and loosening fabrics, providing dual-purpose utility.
- Designed to cater to the needs of middle and small-sized factories, this machine offers convenient portability.



SPECIFICATION

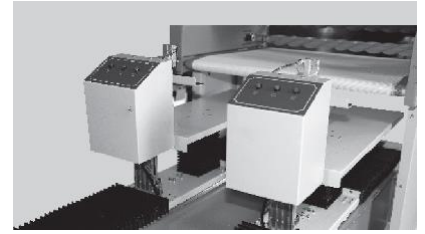
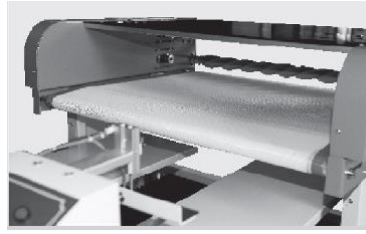
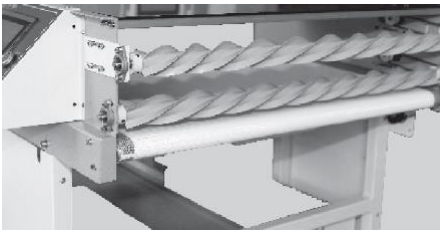
Model	GL-5800
Power Supply	1P/220V
Air Pressure	0.4-0.5mpa
Steam Consumption	50kg/hr
Shrink Width	1800mm/2100mm
Working Speed	0-30m
Machine Size (LxWxH)	2500×1500×965mm
Packing Size (LxWxH)	2400x1700x1115mm / 2700x1700x1115mm
N. W / G. W	250/330kgs



GL-900LL DOUBLE STATION AUTOMATIC RECEIVING MACHINE

FEATURES

- The system is equipped with computerized control and high automation, utilizing an imported PLC and servo motor transmission.
- With the LCD touch interface, users can easily set the length, mode, quantity, and speed of the receipt. This ensures a simple operation, organized collection, and labor-saving process.
- The inclusion of a duplex receiving mechanism significantly enhances work efficiency.
- The electro-optic automatic induction device enables the correct execution of the receiving sequence operation through an automated working cycle.
- By incorporating imported precision linear guide sliders and a precise lifting module, the system ensures stable, accurate, fast, and efficient operation.
- The utilization of precision pneumatic components further enhances stability, speed, and efficiency.



SPECIFICATION

Model	GL-900LL
Power Supply	1P/220V 50HZ
Air Pressure	0-6mpa
Fusing Width	900mm
Machine Size (Lxwxh)	2100×1300×1260mm
Packing Size (Lxwxh)	2200x1400x1400mm
N. W / G. W	280/400kgs

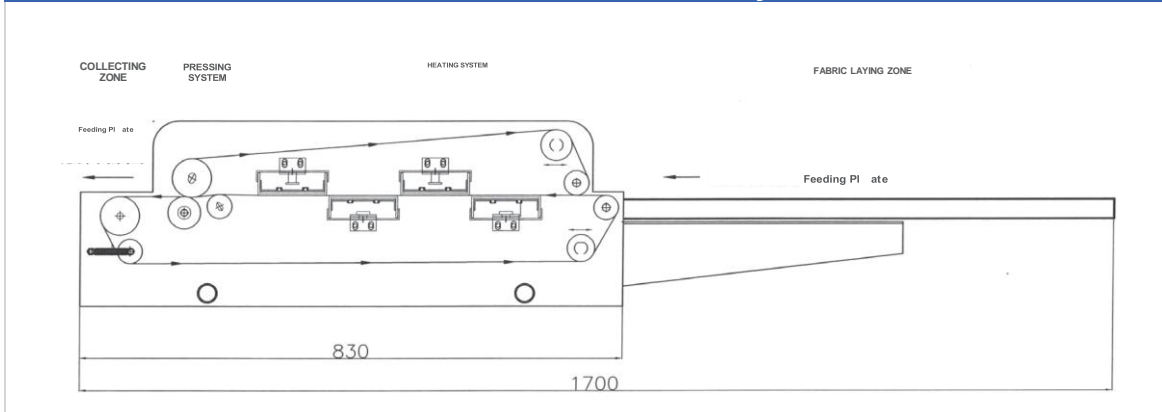


GL-450 FUSING PRESS MACHINE

FEATURES

- The machine is compact in size and easy to move around. It is specifically designed for flat knit fabrics and their cut patterns fusing press requirements.
- With its open structure, this machine is suitable for larger cuts such as sleeve cuts, providing flexibility in usage.
- The rotary strip-off feature of this machine ensures that the cuts can be separated without foaming or deformation.
- To prevent belt deviation, this machine is equipped with a device that eliminates the need for disassembling the machine. This ensures the longevity of the belt and saves time.
- The special pressure assistance device guarantees a maximum pressure of 1.5kg/cm, ensuring optimal performance.
- The electronic temperature adjuster and unique heating device minimize temperature errors, resulting in precise and accurate heat application.
- This machine utilizes a Teflon transmission belt, known for its durability and smooth operation.
- The cleaning beam allows for easy cleaning of the belt at any time, maintaining its efficiency. Equipped with a powerful cooling down fan, this machine effectively prevents damage to electronic parts caused by high temperatures.

Functional Structure Layout



SPECIFICATION

Model	GL-450
Power Supply	1P/220V
Motor	60W
Power	3.6KW
Maximum Pressure	1.5kg/cm ²
Set Temperature	Room Temp-180°C
Fusing Width	450mm
Fusing Time	10s-34s
Fabric Scraper	Rotary Striy-off
Machine Size (LxWxH)	1700×910×360mm
Packing Size (LxWxH)	1090×1000×570mm
N. W / G. W	140/170kgs

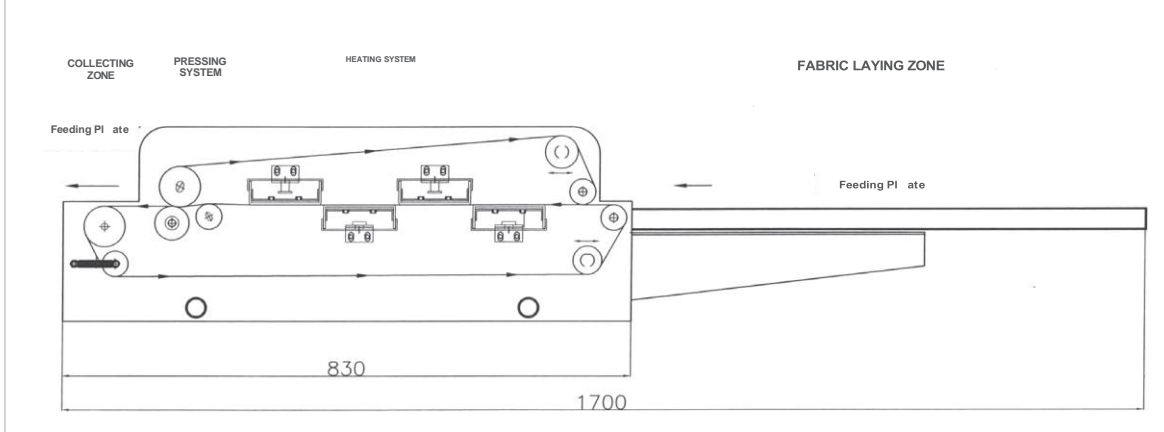


GL-450G FUSING PRESS MACHINE

FEATURES

- Compact in size and easy to move around, this machine is ideal for flat knit fabrics and their corresponding cut patterns that require fusing press.
- With an open structure, it can accommodate larger cuts like sleeve cuts with ease.
- The rotary strip-off feature ensures that cuts are separated without any foaming or deformation.
- Custom-made tract and Teflon conveyor guarantee a smooth and steady operation.
- Equipped with a special pressure assistance device, it can deliver a maximum pressure of 1.5kg/cm.
- The electronic temperature adjuster and unique heating device work together to minimize temperature errors.
- Utilizing a Teflon transmission belt, it ensures durability and efficiency.
- The cleaning beam allows for easy maintenance of the belt at any given time.
- A powerful cooling down fan is in place to prevent any damage to electronic parts due to high temperatures.

Functional Structure Layout



SPECIFICATION

Model	GL-450G
Power supply	1P/220V
Motor	60W
Power	3.6KW
Maximum Pressure	1.5kg/cm ²
Set Temperature	Room Temp-180°C
Fusing Width	450mm
Fusing Time	10s-34s
Fabric Scrapper	Rotary Stray-off
Machine Size (LxWxH)	1700×910×360mm
Packing Size (LxWxH)	1090×1000×570mm
N. W / G. W	140/170kgs

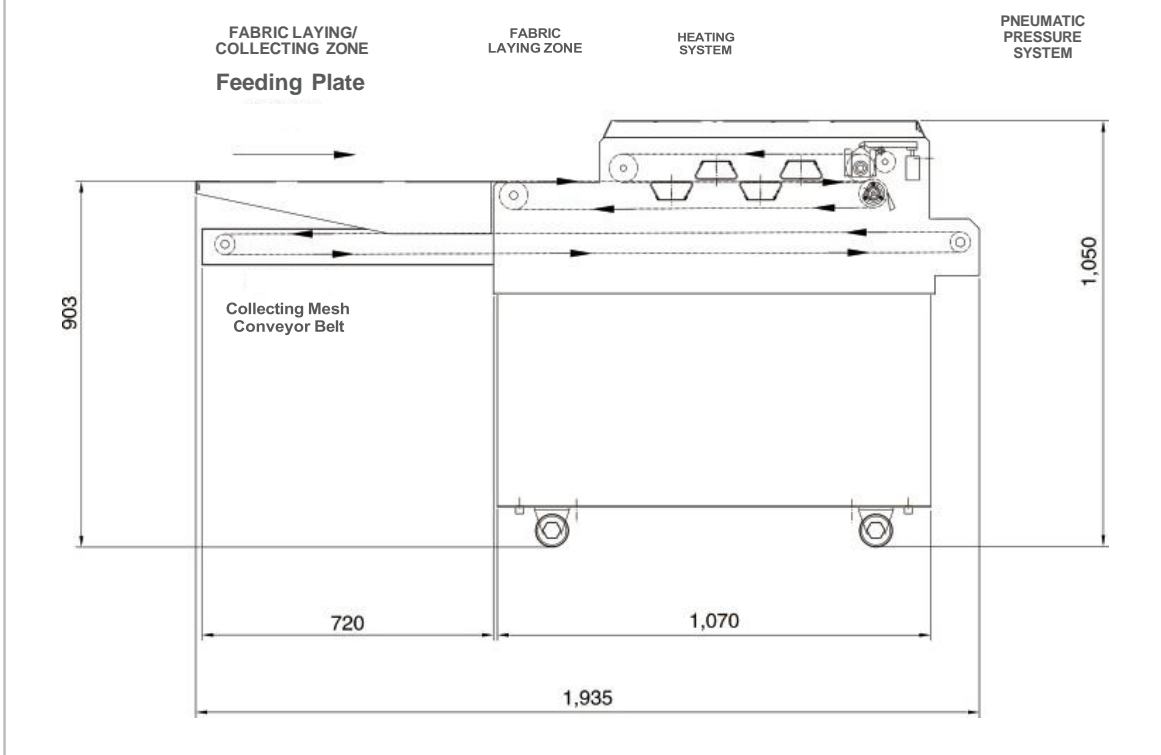


GL-600F/FA FUSING PRESS MACHINE

FEATURES

- The automatic cooling and shutdown switch is timed for efficiency.
- A heating monitoring device is capable of regulating the formal operation of the heating system.
- The machine is equipped with movable rollers at the bottom, facilitating easy handling.
- Continuous fusing operation, with no restriction on cut length, enhances production efficiency.
- Utilizing a pneumatic pressure regulator, electronic temperature regulator, and special heating device helps minimize temperature differences.
- The machine features a specially structured belt that eliminates belt deviation and ensures a longer working life.

Functional Structure Layout



SPECIFICATION

Model	GL-600F	GL-600FA
Power Supply	1P/220V	3P/380V
Motor	40W	
Power	5.2KW	
Maximum Pressure	2kg/cm ²	
Set Temperature	Room Temp-180°C	
Fusing Width	600mm	
Fusing Time	10s-34s	
Fabric Scraper	Rotary Stray-off	
Machine Size (LxWxH)	2550×1100×1050mm	
Packing Size (LxWxH)	1360×1220×1240mm	
N. W / G. W	260/330kgs	



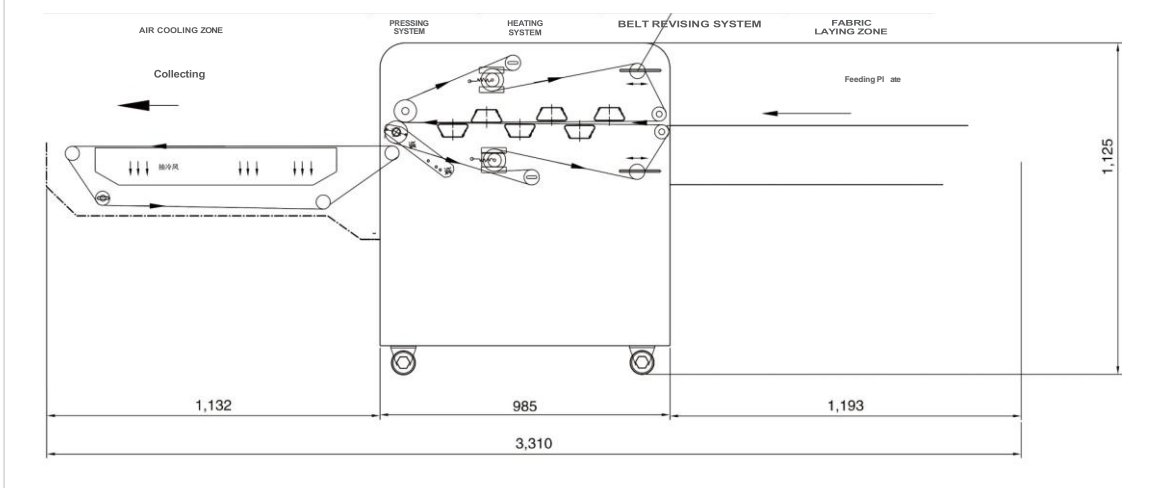
GL-600A/900A

CONTINUOUS FUSING PRESS MACHINE

FEATURES

- Continuous fusing operation has the potential to enhance productivity.
- The fusing width is available in two options: 600mm or 900mm, with no restrictions on the length.
- The automatic belt correction device guarantees that the upper and lower belts remain aligned and do not deviate.
- The electronic thermostat, along with the constant temperature system controlled by a solid-state relay, ensures minimal temperature deviation.
- The heating monitoring device effectively controls the heating system's normal operation.
- The heating system consists of six groups of electrical heating tubes, enabling even heat transmission and suitable for various fabric types.
- The imported Teflon fusing belt ensures a consistent temperature throughout.
- It is equipped with an anti-fold roller to handle different fabric types.
- The belt mesh conveyor series aids in the cooling process.
- It features an auto cooling, constant-temperature, and shutdown device.
- A pressure compression device is included.
- The cleaning beam, specifically designed for this purpose, thoroughly cleans the belt and can be easily replaced.
- Optional: The lengthened belt option is available (L).

Functional Structure Layout



SPECIFICATION

Model	GL-600A	GL-900A
Power supply	3P/380V	
Motor	240W	
Power	9.2KW	12KW
Maximum Pressure	4kg/cm ²	
Set Temperature	Room Temp-200°C	
Fusing Width	600mm	900mm
Fusing Time	5s-30s	
Fabric Scraper	Standard Scraper	
Machine Size (LxWxH)	3100×1360×1420mm	2270×1360×1400mm
Packing Size (LxWxH)	2270×1300×1400mm	2310×1600×1400mm
N. W / G. W	550/650kgs	660/750kgs

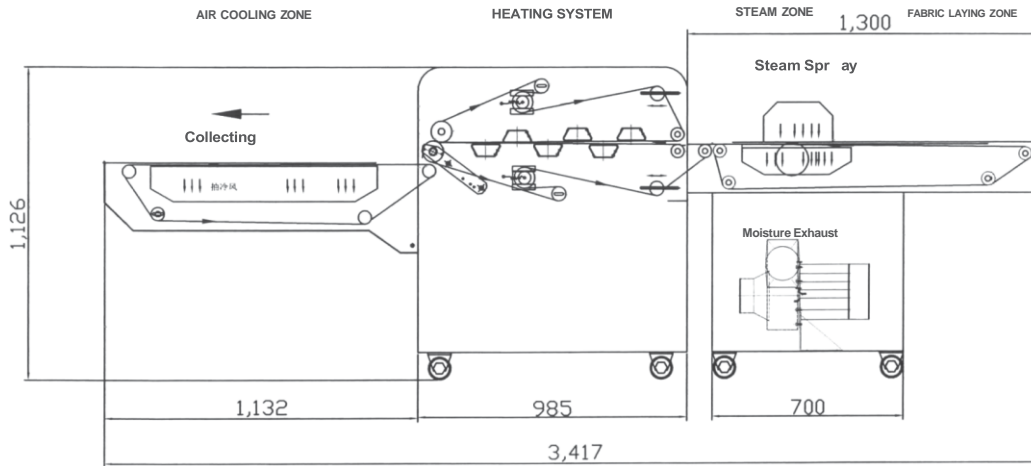


GL-900RS CONTINUOUS FUSING PRESS MACHINE

FEATURES

- The machine is designed for premium leather jacket production, with significant enhancements to maintain consistent pigment application.
- The bonding width of the machine can reach up to 900mm, with an unlimited length capacity.
- An automatic belt correction feature ensures that the top and bottom belts remain aligned without deviation.
- Electronic thermostat and SSR technology work together to minimize temperature variations during operation.
- The heating control equipment is responsible for regulating the heating system's normal functions.
- 6 groups of galvanothermy tubes provide uniform heating for various fabric types.
- An imported Teflon adhesion belt helps maintain a consistent temperature throughout the machine.
- The roller, equipped with wrinkle protection, can handle a wide range of fabric materials.
- A wire-belt conveyor system is integrated into the machine to provide effective cooling.
- Additional features include automatic cooling thermostat, emergency stop device, pneumatic pressure device, and a specially designed cleaning fabric rod for belt maintenance and replacement convenience.
- Optional: Longer L belt for extended production capabilities.

Functional Structure Layout



SPECIFICATION

Model	GL-900RS	
Power supply	3P/380V	
Motor	1190W	
Power	12KW	
Maximum Pressure	4kg/cm ²	
Set Temperature	Room Temp-200°C	
Fusing Width	900mm	
Fusing Time	10s-34s	
Fabric Scrapper	Standard Scrapper	
Machine Size (LxWxH)	3420×1660×1420mm	
Packing Size (LxWxH)	2100×1660×1570mm	1430×1660×1570mm
N. W / G. W	880/950kgs	



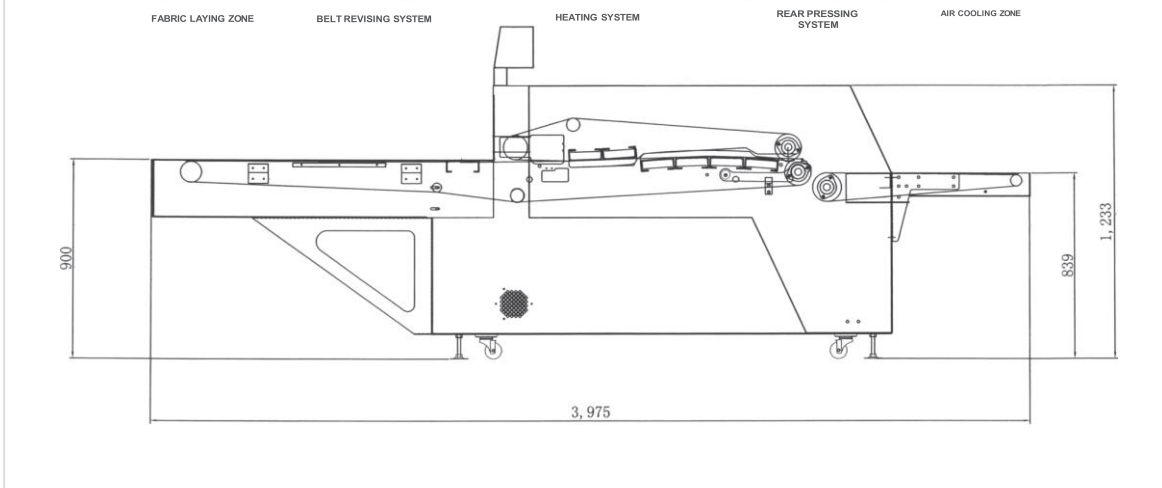
GL-1000B

LOW-TEMPERATURE CONTINUOUS FUSING PRESS MACHINE

FEATURES

- The machine boasts a sophisticated design with 7 sets of heating systems and a reinforced frame/structure for optimal performance.
- It utilizes an independent two-step micro-computer temperature controlling system, ensuring precise and efficient operation.
- The interlining adhesive and fabric pass through an independent pressure system, where a silicone roller with a cylinder guarantees a consistent pressure, resulting in superior adhesive strength.
- Both the upper and lower conveyor belts are equipped with an automatic direction revising system, ensuring stable and reliable belt operation.
- The rear section of the machine features a powerful ventilation cooling system, which quickly cools down the fabric after fusing, maintaining the adhesive strength at its best condition.
- This machine is suitable for fusing the entire volume of high-temperature interlining and can be coordinated with additional optional conveyor and feeding devices.
- It is designed to meet the manufacturing needs of various garments, including men's suits, casual wear, and lady dresses, ensuring customer satisfaction.

Functional Structure Layout



SPECIFICATION

Model	GL-1000B
Power supply	3P/380V
Motor	400W
Power	21KW
Maximum Pressure	4kg/cm ²
Set Temperature	Room Temp-200°C
Fusing Width	1000mm
Fusing Time	10s-34s
Fabric Scrapper	Standard Scrapper
Machine Size (LxWxH)	3980 × 1520 × 1500mm
Packing Size (LxWxH)	3850 × 1660 × 1710mm
N. W / G. W	1100/1200kgs

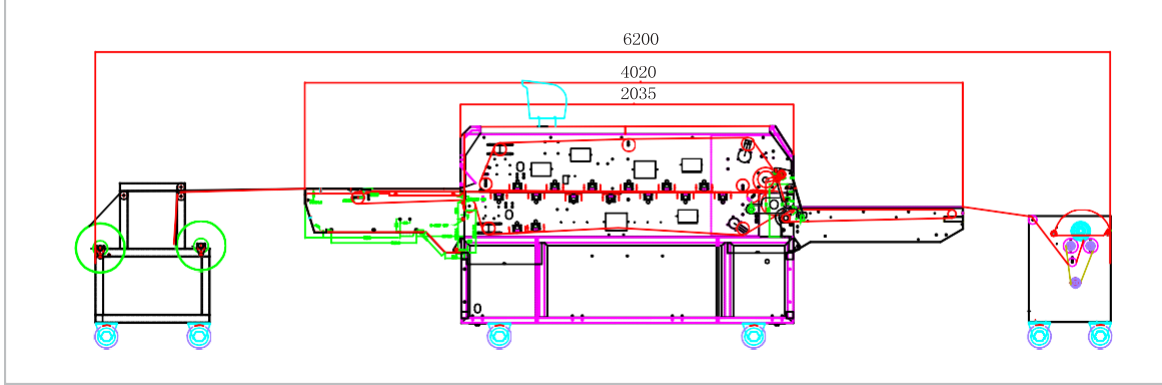


GL-900-1800LL FUSING MACHINE

FEATURES

- The design incorporates a specialized lengthening preheating mechanism, enabling the cut to bond seamlessly at lower temperatures. This approach minimizes color discrepancies that may arise from high-temperature bonding while preserving the fabric's texture.
- It features a PID temperature controller equipped with an advanced digital display.
- Pneumatic pressure regulation guarantees precise pressure application. The system includes 15 sets of specialized heating units to reduce temperature variation.
- The finished blanching interlining material is conveyed at the outlet using a robust suction bellows, which cools the fabric and enhances adhesion.
- Cleaning apparatus is in place to maintain the cleanliness of Teflon belts during transit. A dedicated fabric removal device facilitates a smoother operational process.
- The extended feeding area accommodates multiple personnel, thereby enhancing production efficiency during the bonding process.

Functional Structure Layout



Unwindingwinding composite integrated bondingmachine Automatic admission feeding device (optional)

SPECIFICATION

Voltage	3P-380V
Motor Power	0.65KW
Total Power Of The Generator Tube	42KW
Maximum Pressure	5Kg/cm
Set Temperature	200° C
Bond Width	1600mm
Bond Time	10-34Secs
Machine Size	4020mmX2200mmX1300mm
Packing Size	4100mmX2270mmX1750mm
Net/Gross Weight	1200/1350KG



GL-360series PACKAGING MACHINE

FEATURES

- Enhanced preheating duration can lead to optimal fusion of cuts at lower temperatures, thereby reducing color variation in high-temperature fusion while maintaining the fabric's texture.
- The machine is equipped with a PID temperature controller featuring a sophisticated digital display for precise temperature regulation.
- Pneumatic pressure control ensures accurate pressure application during the fusion process.
- Twelve specialized heating elements work together to minimize temperature differentials across the fabric.
- A powerful vacuum box cools the fused fabric at the conveyor exit, enhancing the fusion process.
- The cleaning mechanism effectively maintains the cleanliness of the Teflon belt during operation.
- A unique fabric separation device facilitates smooth operation of the machine.
- An extended feeding area accommodates multiple operators, boosting productivity during the fusion process.
- The machine is equipped with movable wheels at the base for easy maneuverability and handling.

GL-3606

Automatic packing
machine (Front zone) –Folding
machine

GL-3610

Automatic packing
machine (Middle zone) –
Bagging machine

GL-3612

Automatic packing
machine (Back Zone) –Gluing
machine

SPECIFICATION

Model	GL-3606	GL-3610	GL-3612
El. Supply	220V AC/3 PHASES +N+PE. 50-60Hz		
El. Power	1.44KW	0.5KW	0.51KW
Air pressure	6bar		
AVG Air Consumption	50NL/min	70NL/min	30NL/min
Max. Output	15Packages/min	/	15Packages/min
Min. Output	8Packages/min	/	/
Operator	1	/	/
Unfolded Garments (mm)	100&80mm (=1200mm)	/	/
Folded Width (mm)	18 to 320 mm	/	/
Folded height (mm)	0-100mm	/	/
Bag' s Width (mm)	/	180-380mm	160-360mm
Bag' s Capacity	/	80-100	/
Flap Length Max (mm)	/	/	150mm
Max. Tape Width (mm)	/	/	12mm
Dimensions (mm)	2750*1240*1360	860*670*1290	2080*850*1190
Net Weight (KG)	335kg	130kg	175kg

SCAN ME



GLEADER

ANHUI GLEADER INTELLIGENT TECHNOLOGY CO. LTD.,

安徽格莱德智能科技有限公司

